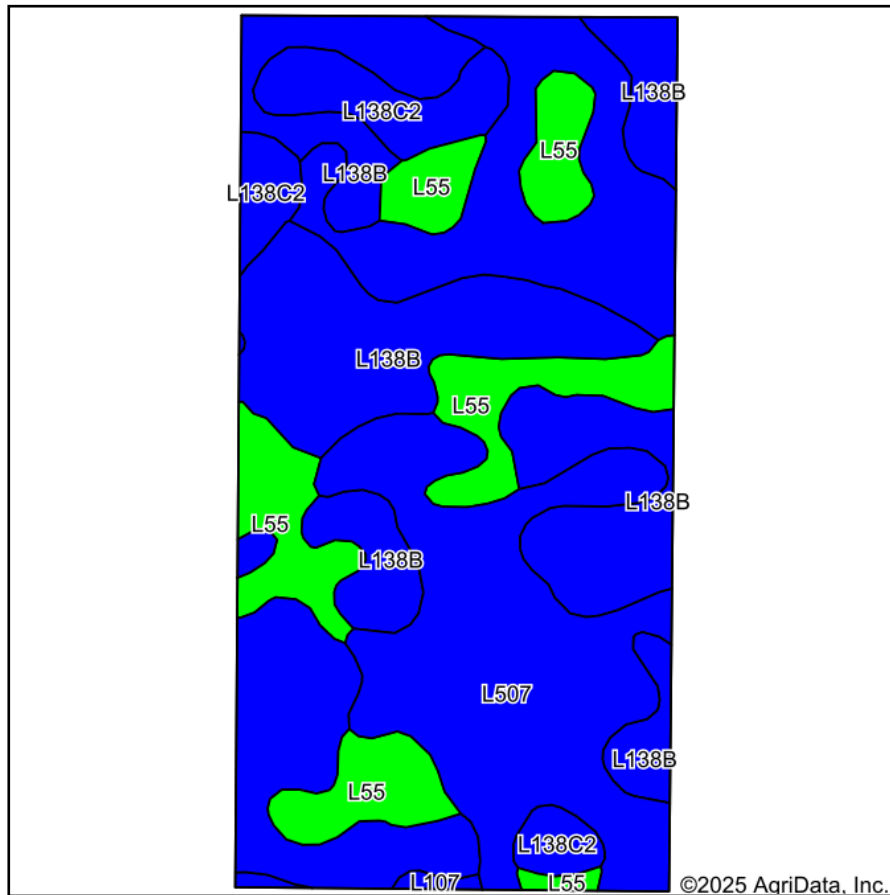
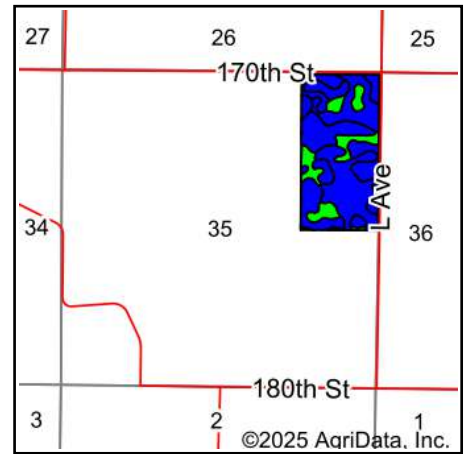


Soils Map



Soils data provided by USDA and NRCS.



State: **Iowa**
 County: **Dallas**
 Location: **35-81N-28W**
 Township: **Spring Valley**
 Acres: **77.64**
 Date: **9/17/2025**



Maps Provided By:



Area Symbol: IA049, Soil Area Version: 31

Code	Soil Description	Acres	Percent of field	CSR2 Legend	Non-Irr Class *c	CSR2**	*n NCCPI Overall
L138B	Clarion loam, Bemis moraine, 2 to 6 percent slopes	31.27	40.3%		Ile	88	79
L507	Canisteo clay loam, Bemis moraine, 0 to 2 percent slopes	28.28	36.4%		Ilw	87	81
L55	Nicollet loam, 1 to 3 percent slopes	12.28	15.8%		Ie	91	84
L138C2	Clarion loam, Bemis moraine, 6 to 10 percent slopes, moderately eroded	5.40	7.0%		Ille	83	64
L107	Webster clay loam, Bemis moraine, 0 to 2 percent slopes	0.41	0.5%		Ilw	88	84
Weighted Average					1.91	87.8	*n 79.5

**IA has updated the CSR values for each county to CSR2.

*n: The aggregation method is "Weighted Average using all components"

*c: Using Capabilities Class Dominant Condition Aggregation Method