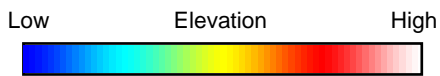
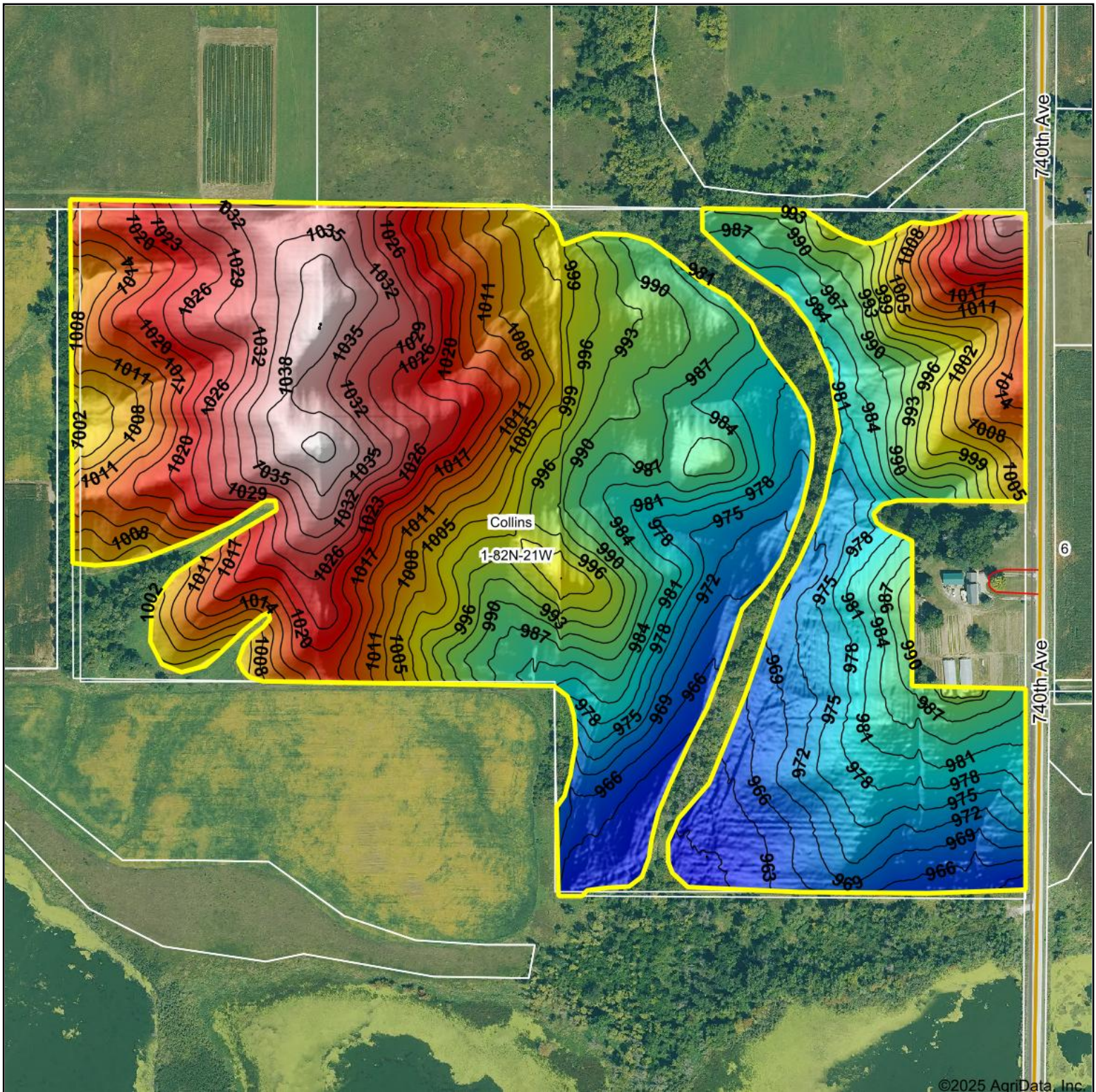


Topography Hillshade



Source: USGS 1 meter dem

Interval(ft): 3

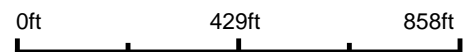
Min: 958.7

Max: 1,042.3

Range: 83.6

Average: 998.7

Standard Deviation: 22.05 ft



7/23/2025

1-82N-21W
Story County
Iowa

Boundary Center: 41° 56' 35.95, -93° 14' 12.19



Maps Provided By:



© AgriData, Inc. 2023

www.AgriDataInc.com

Field borders provided by Farm Service Agency as of 5/21/2008.