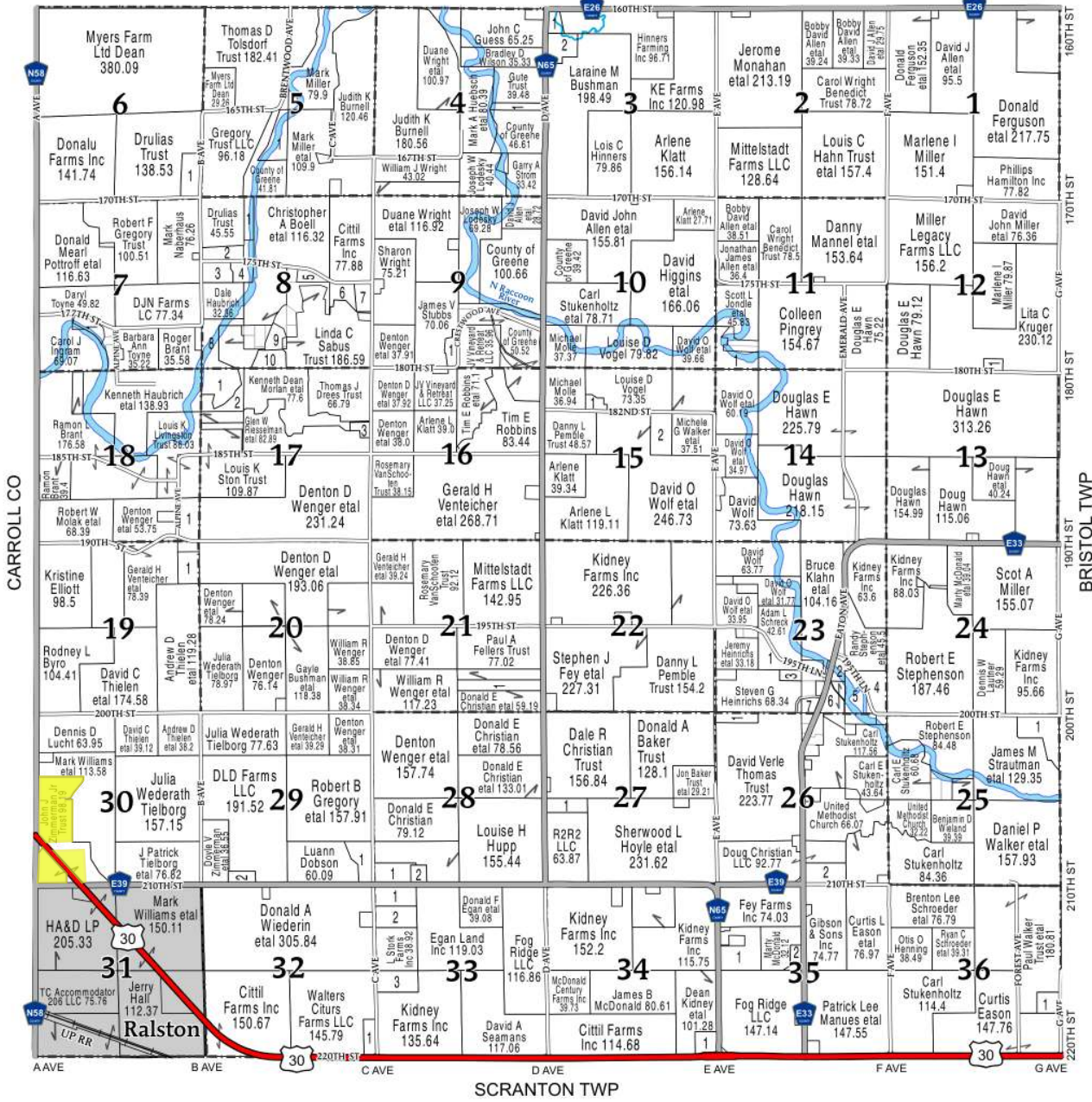


(Landowners)  
CEDAR TWP



SCRANTON TWP

**KENDRICK TOWNSHIP**

<b>SECTION 3</b>	3 BROSH TRUST, DOUGLAS J ETAL	13.21
	4 BROSH, JESSE	9.04
1 WHITE, B PAUL ETAL	5 SCHULZ, ROYCE W ETAL	6.04
2 STOFER, DANIEL L ETAL	6 SCHULZ, ROYCE S ETAL	11.15
	7 HALBUR, DANIEL J ETAL	9.85
<b>SECTION 4</b>	8 RACCOON RIVER BIBLE CONFERENCE	23.3
1 COUNTY OF GREENE	9 DREES TRUST, DONNA M	8.5
	10 BROSH, DAVID D ETAL	12.33
<b>SECTION 5</b>		
1 COUNTY OF GREENE		18.53
<b>SECTION 6</b>		
1 JOHNSON, JEREMIAH		17.06
<b>SECTION 7</b>		
1 PAUP TRUST, DENNIS C		8.65
<b>SECTION 8</b>		
1 HANSEN, SCOTT R ETAL		9.17
2 BOHAC TRUST, KEVIN F		12.35

<b>SECTION 17</b>	2 SELLERS, LARRY	19.7
	1 HAUBRICH, KENNETH ETAL	24.87
	2 WOODHOUSE, ROBERT	20.96
	3 ALLEN, SHANE	5.05
<b>SECTION 18</b>		
1 WENGER, DENTON D ETAL		18.66
<b>SECTION 19</b>		
1 WENGER, DENTON		14.83
<b>SECTION 21</b>		
1 CHRISTIAN, DONALD ETAL		19.73
<b>SECTION 23</b>		
1 HEINRICH, STEVEN		14.57
2 COUNTY OF GREENE		6.57
3 STEVENS, RUBY		5.08
4 STEPHENSON, ROBERT E		18.01

5 STUKENHOLTZ, CARL E	18.32
6 WIELAND, BENJAMIN D	13
7 STEVENS, RUBY ETAL	7.37
<b>SECTION 25</b>	
1 BROWN, ROBERTA J	27.36
<b>SECTION 26</b>	
1 HEINRICH, STEVEN G	9.82
2 GIBSON & SONS INC	18.17
<b>SECTION 27</b>	
1 HOYLE, SHERWOOD L ETAL	12.97
<b>SECTION 28</b>	
1 CHRISTIAN, DONALD EVAN	16.46
2 JANNING, RICK ETAL	6.18
<b>SECTION 29</b>	
1 DOBSON, ROBERT	16.99
2 NOBILING, MARK A	7.2

<b>SECTION 32</b>	1 CITURS TRUST, KARL M	9.02
<b>SECTION 33</b>		
1 STORK TRUST, LYNN J	18.55	
2 STORK, HALEY N	19.49	
3 WALTERS CITURS FARMS LLC	19.61	
<b>SECTION 34</b>		
1 ITC MIDWEST LLC	10.17	
<b>SECTION 35</b>		
1 MCDONALD TRUCK WASH INC	34.69	
2 HICKS WELL CO INC	7.05	
<b>SECTION 36</b>		
1 WALKER, DOYLE R	10.42	

