



PROPERTY FOR SALE

Wapello County

10
ACRES +/-



PROPERTY DESCRIPTION

PRICE: \$115,000

Hard to find 10 +/- acres located just 3.5 miles south of Ottumwa, Iowa. This would make a great building site with just 400 yards of gravel. These 10 acres sit on a hill and the views to the south are beautiful at sunset and watch the deer come out of the cedar trees to feed in the evening. There are approximately 4 acres of open ground and 6 acres of timber. Whether thinking about building that perfect barndominium or shed for your equipment, this just might be your spot. Subject to survey. For more information on this property call Land Agent Jim Davis.



JIM DAVIS | SOUTHEAST IOWA LAND AGENT
Jim@IowaLandCompany.com
641-777-5484

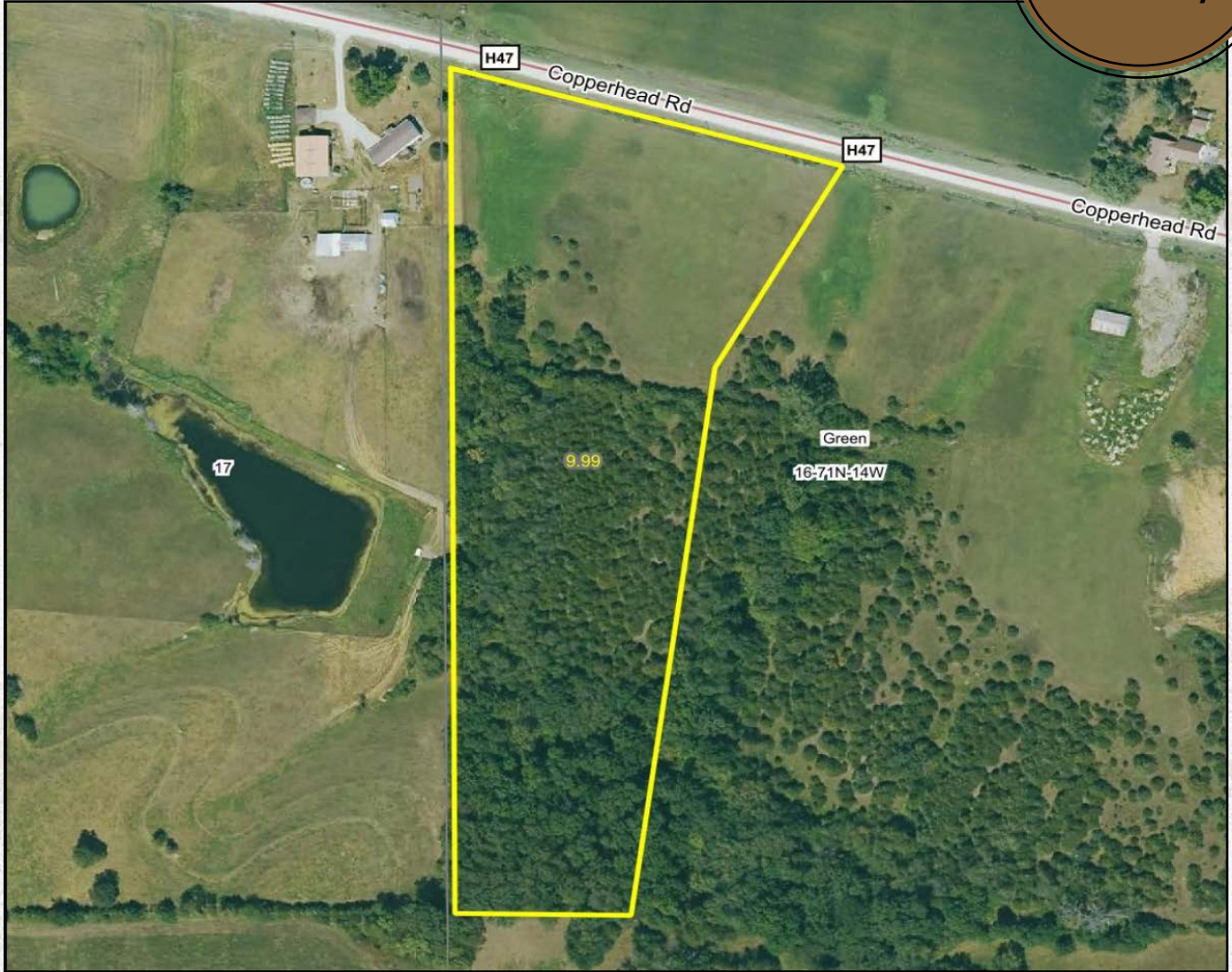
Urbandale Office
2540 106th St. Suite 201
Urbandale, IA 50322



AERIAL PHOTO

Wapello County

10
ACRES +/-



PROPERTY SPECIFICATIONS:

Asking Price:

\$115,000

Location:

From Ottumwa Iowa, from the corner of Lake Road and Bluegrass Road head south on Lake Road. Go south 3.75 miles to Copperhead Road. Turn (right) west, go 400 yards and the farm will be on the south side of the road. Look for a sign.

Legal Description:

Taxes: TBA. Green Township, Section 16-71N-14W

Tax Information:

Taxes: TBA

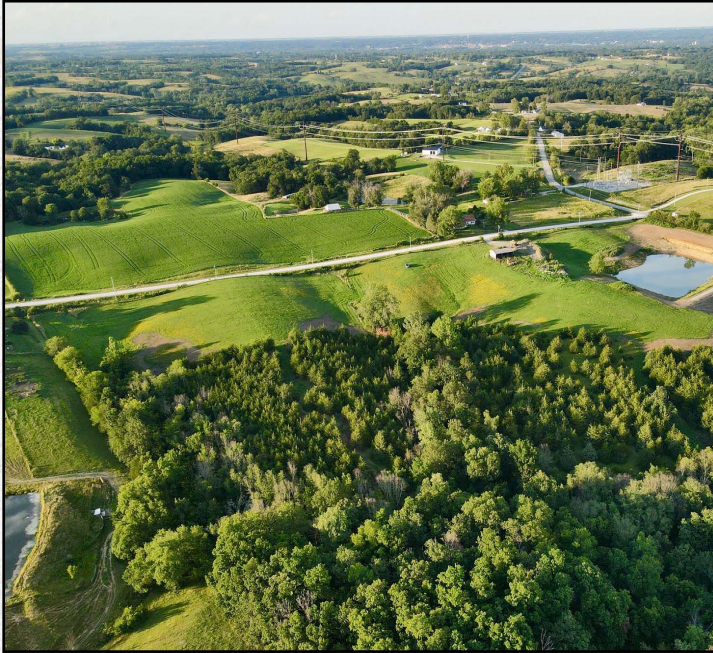
JIM DAVIS | SOUTHEAST IOWA LAND AGENT
Jim@IowaLandCompany.com
641-777-5484

Branded in Land



PROPERTY PHOTOS

Wapello County







ABOUT US

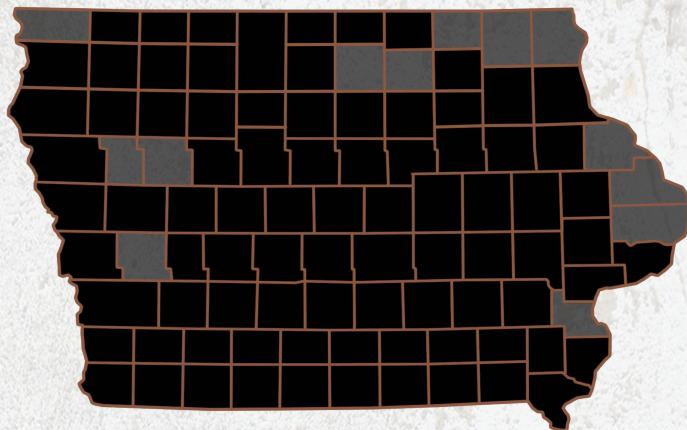
We are Iowa Land Company

A REAL ESTATE BROKERAGE GROWN ON THE BEST DIRT IN AMERICA

WHAT WE DO

At Iowa Land Company, our approach is like that of a farmer: prepare, do the hard work and when the time comes, enjoy a successful harvest. We're a farmland real estate company and helping connect buyers and sellers of Iowa land is our specialty. As a team of native Iowans, our boots only know Iowa dirt. Our team of land experts combine years of real estate experience with the latest technology and marketing innovations to give you a modern real estate service unmatched in the Hawkeye State.

-  LAND AUCTIONS
-  LAND LISTINGS
-  NATIONAL MARKETING



"IOWA IS OUR FACTORY, LAND MARKETING IS OUR CRAFT, FARMLAND TRANSACTIONS ARE OUR PRODUCT, AND THE PEOPLE ARE WHAT MAKE UP OUR BUSINESS"

-Iowa Land Company



Jim is your local Land Agent for Iowa Land Company. Jim is from Ottumwa, Iowa and has developed strong relationships throughout Southeast Iowa. His commitment to his clients guarantees Jim will work tirelessly on their behalf, whether selling or buying. *"My goal is to be your trusted land source throughout Southeastern Iowa. I look forward to the opportunity to work for you and your family."*

-Jim Davis

JIM DAVIS | SOUTHEAST IOWA LAND AGENT
Jim@IowaLandCompany.com
641-777-5484

Branded in Land