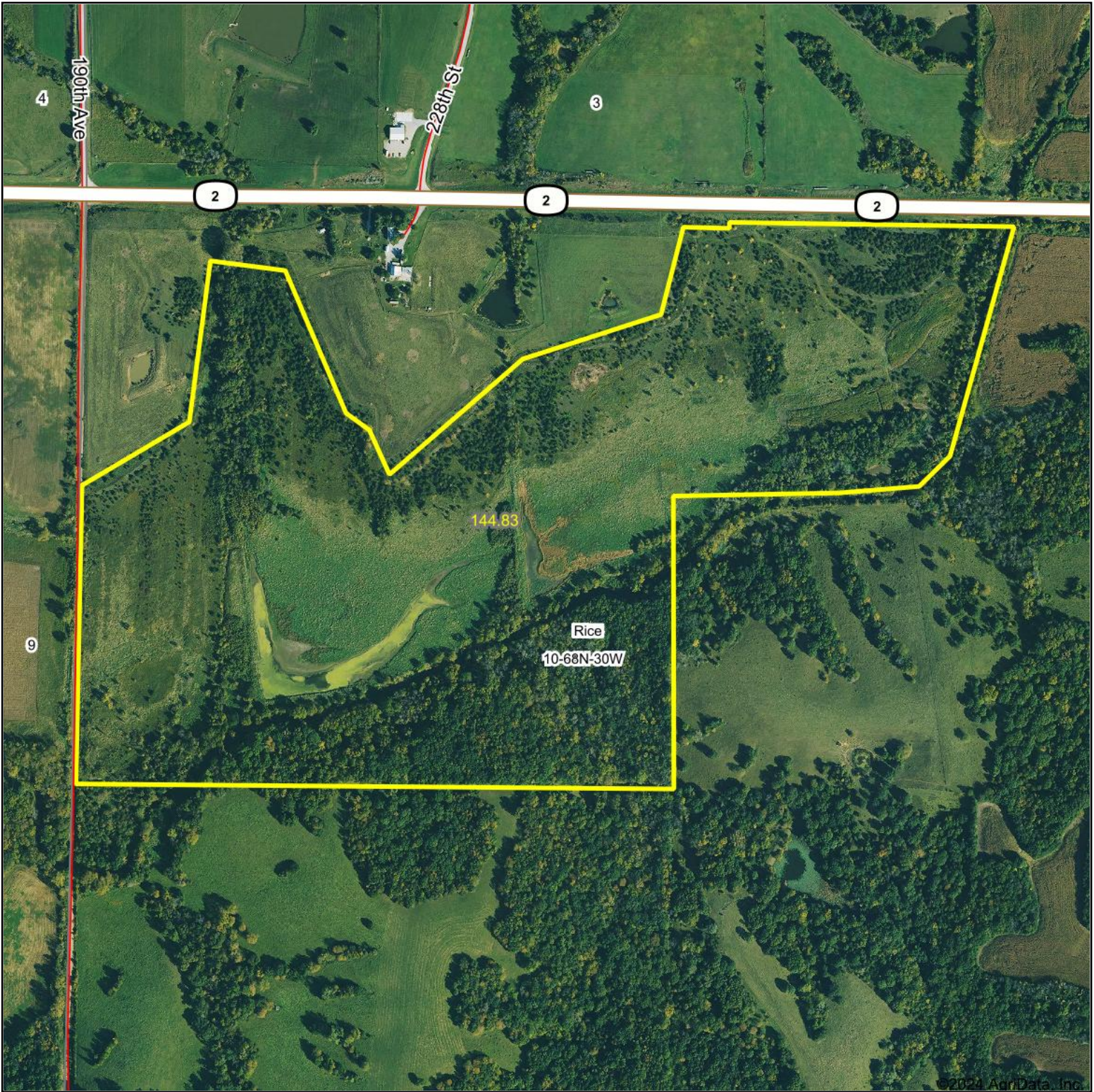


Aerial Map

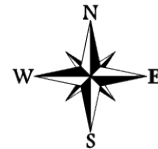


Boundary Center: 40° 42' 26.79, -94° 17' 32.35

0ft 684ft 1369ft



10-68N-30W
Ringgold County
Iowa



Maps Provided By:
 **surety**
CUSTOMIZED ONLINE MAPPING
© AgriData, Inc. 2023 www.AgriDataInc.com

6/7/2024