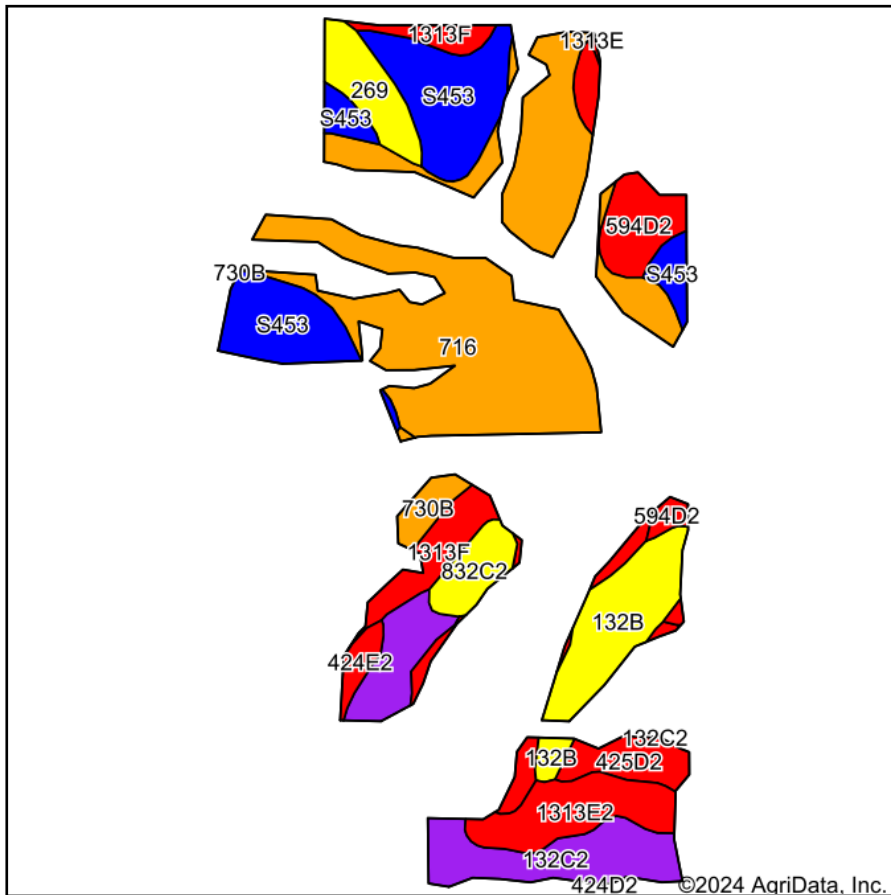
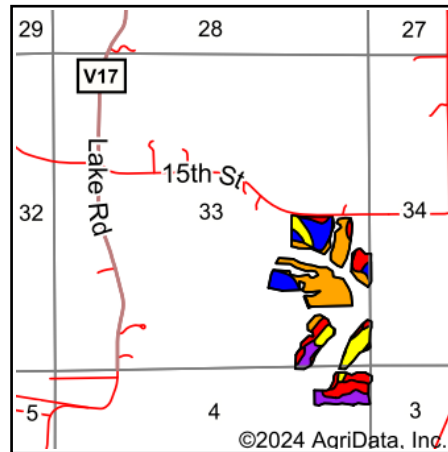


Soils Map



Soils data provided by USDA and NRCS.



State: **Iowa**
 County: **Wapello**
 Location: **33-71N-14W**
 Township: **Green**
 Acres: **51.32**
 Date: **4/27/2024**



Maps Provided By:

 CUSTOMIZED ONLINE MAPPING
 © AgriData, Inc. 2023 www.AgriDataInc.com



Area Symbol: IA051, Soil Area Version: 30
 Area Symbol: IA179, Soil Area Version: 32

| Code | Soil Description | Acres | Percent of field | CSR2 Legend | Non-Irr Class *c | *i Corn Bu | *i Soybeans Bu | CSR2** | CSR | *n NCCPI Soybeans |
|--------|--|-------|------------------|-------------|------------------|------------|----------------|--------|-----|-------------------|
| 716 | Lawson-Quiver-Nodaway complex, 0 to 2 percent slopes, occasionally flooded | 17.57 | 34.2% | | Ilw | 80.0 | 23.2 | 78 | | 86 |
| S453 | Tuskeego silt loam, 0 to 2 percent slopes, rarely flooded | 8.15 | 15.9% | | Illw | 0.0 | 0.0 | 81 | | 77 |
| 132B | Weller silt loam, 2 to 5 percent slopes | 3.71 | 7.2% | | Ille | 80.0 | 23.2 | 67 | 55 | 80 |
| 132C2 | Weller silty clay loam, 5 to 9 percent slopes, moderately eroded | 3.64 | 7.1% | | Ille | 80.0 | 23.2 | 59 | 40 | 67 |
| 1313E2 | Munterville silt loam, 9 to 18 percent slopes, moderately eroded | 3.04 | 5.9% | | Vle | 112.0 | 32.5 | 22 | 5 | 39 |
| 1313F | Munterville silt loam, 18 to 40 percent slopes | 2.94 | 5.7% | | Vlle | 80.0 | 23.2 | 5 | 5 | 7 |
| 594D2 | Galland loam, heavy loess, 9 to 14 percent slopes, moderately eroded | 2.86 | 5.6% | | Ive | 88.0 | 25.5 | 19 | 5 | 49 |
| 269 | Humeston silt loam, 0 to 2 percent slopes, occasionally flooded | 2.01 | 3.9% | | Illw | 80.0 | 23.2 | 70 | 58 | 80 |
| S732C2 | Weller silty clay loam, 5 to 9 percent slopes, moderately eroded | 1.97 | 3.8% | | Ille | 0.0 | 0.0 | 59 | | 67 |
| 425D2 | Keswick loam, 9 to 14 percent slopes, moderately eroded | 1.49 | 2.9% | | Ive | 88.0 | 25.5 | 9 | 12 | 41 |
| 832C2 | Weller silty clay loam, terrace, 5 to 9 percent slopes, moderately eroded | 1.44 | 2.8% | | Ive | 80.0 | 23.2 | 61 | 30 | 69 |
| 730B | Nodaway-Cantril complex, 2 to 5 percent slopes | 0.84 | 1.6% | | Ilw | 209.6 | 60.8 | 80 | 63 | 65 |

Soils data provided by USDA and NRCS.



| Code | Soil Description | Acres | Percent of field | CSR2 Legend | Non-Irr Class *c | *i Corn Bu | *i Soybeans Bu | CSR2** | CSR | *n NCCPI Soybeans |
|-------------------------|---|-------|------------------|-------------|------------------|-------------|----------------|-------------|-------------|-------------------|
| 424E2 | Lindley-Keswick loams, 14 to 18 percent slopes, moderately eroded | 0.83 | 1.6% | | Vle | 108.8 | 31.6 | 24 | 5 | 46 |
| 1313G | Munterville silt loam, 18 to 40 percent slopes | 0.46 | 0.9% | | Vlle | 80.0 | 23.2 | 5 | 5 | 7 |
| 132B | Weller silt loam, 2 to 5 percent slopes | 0.37 | 0.7% | | llle | 80.0 | 23.2 | 67 | 60 | 80 |
| Weighted Average | | | | | | 3.25 | 69.4 | 20.1 | 60.4 | *n 68.9 |

**IA has updated the CSR values for each county to CSR2.

*- CSR weighted average cannot be calculated on the current soils data, use prior data version for csr values.*i Yield data provided by the ISPAID Database version 8.1.1 developed by IA State University.

*n: The aggregation method is "Weighted Average using all components"

*c: Using Capabilities Class Dominant Condition Aggregation Method