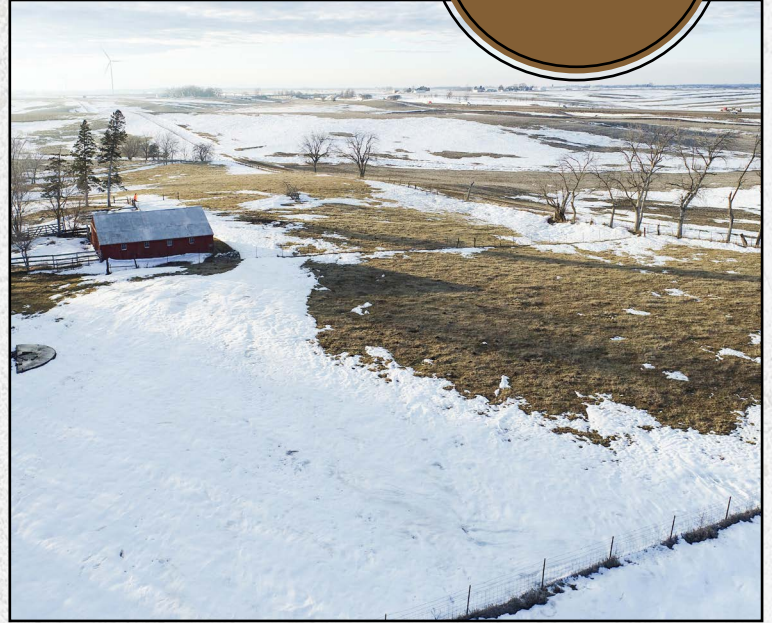




LAND FOR SALE

Madison County

5.1
ACRES +/-



FARM DESCRIPTION

PRICE: \$72,500

Iowa Land Company is pleased to be offering a very nice buildable lot that offers country living and more. The lot offers a manageable commute to the metro just south of Dexter, IA. Mature trees are located on and around the property allowing for a shaded environment. Electric is located near the road. This would suit a buyer that does not want the upkeep of a several acre lot while still being able to enjoy country living. The school district is Earlham. A perfect spot to build a home with additional acres for livestock.

Call Land Broker Luke Skinner at 515-468-3610 or Land Broker Matt Skinner at 515-443-5004 today to set up a private showing.



LUKE SKINNER | LAND BROKER
Luke@iowaLandCompany.com
515-468-3610

Urbandale Office
2540 106th St. Suite 201
Urbandale, IA 50322

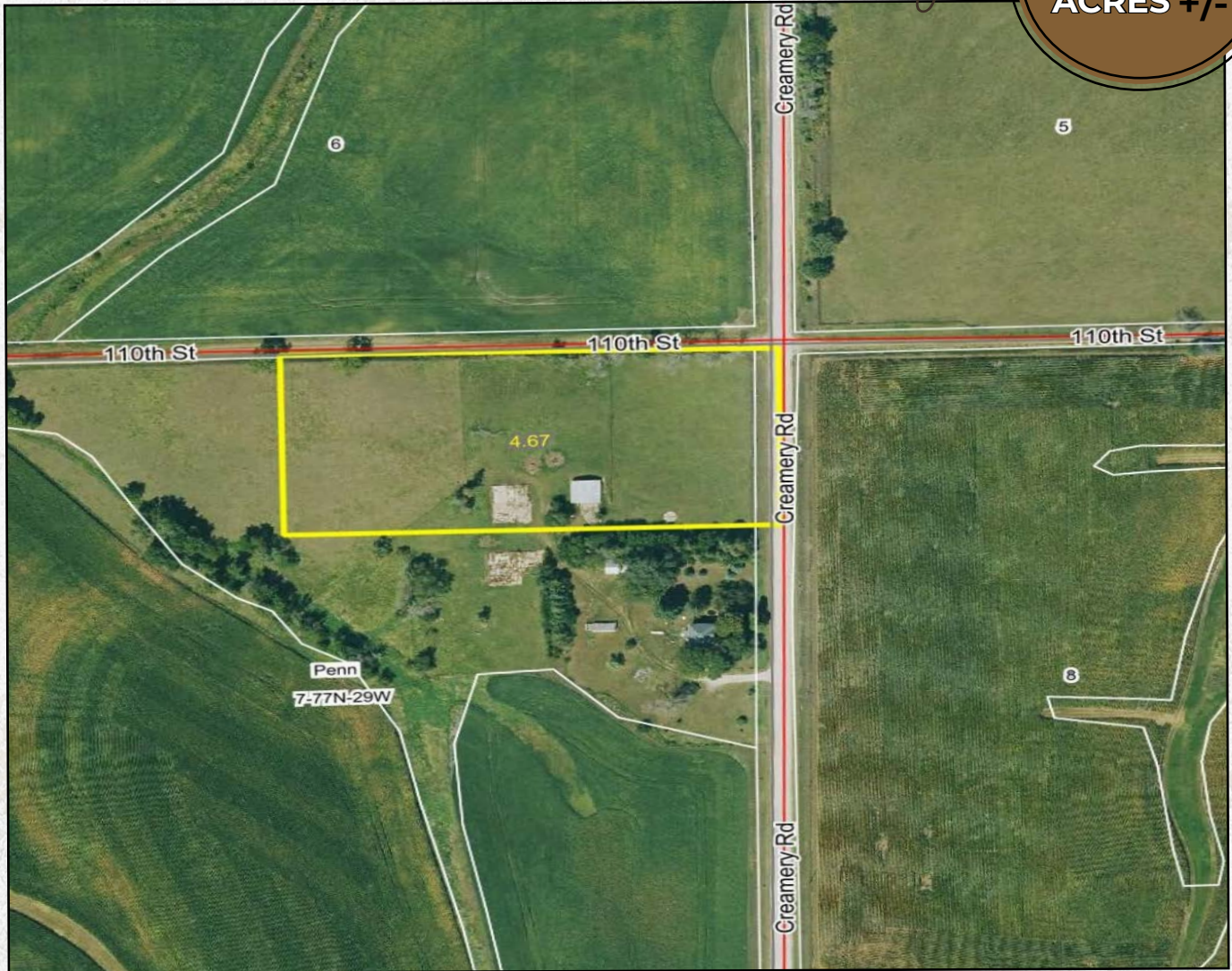
MATT SKINNER | LAND BROKER
Matt@iowaLandCompany.com
515-443-5004



AERIAL PHOTO

Madison County

5.1
ACRES +/-



FARM SPECIFICATIONS:

Asking Price:

\$72,500 or \$14,215/Acre

Location:

From Dexter, Iowa, travel south on Creamery RD 1.5 miles. The property sits on the corner of 110th and Creamery. West side of Creamery RD. For sale signs are located on the property.

Legal Description:

5.1 +/- acres located in Madison County, Iowa Penn Township Section 7

Tax Information:

\$336 +/- annually estimated



PROPERTY PHOTOS

Madison County

5.1
ACRES +/-








ABOUT US

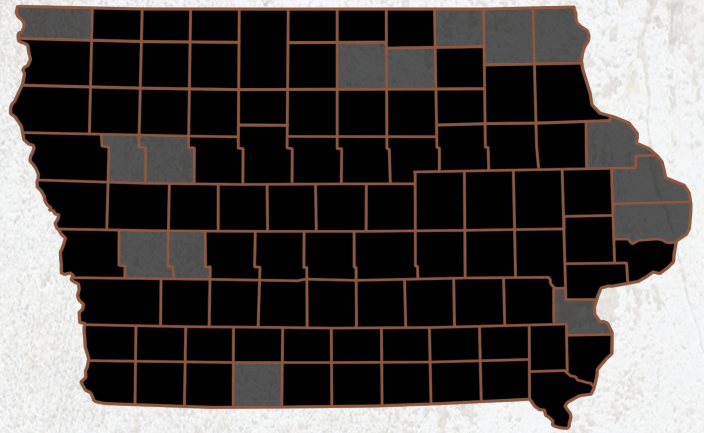
We are Iowa Land Company

A REAL ESTATE BROKERAGE GROWN ON THE BEST DIRT IN AMERICA

WHAT WE DO

At Iowa Land Company, our approach is like that of a farmer: prepare, do the hard work and when the time comes, enjoy a successful harvest. We're a farmland real estate company and helping connect buyers and sellers of Iowa land is our specialty. As a team of native Iowans, our boots only know Iowa dirt. Our team of land experts combine years of real estate experience with the latest technology and marketing innovations to give you a modern real estate service unmatched in the Hawkeye State.

-  LAND AUCTIONS
-  LAND LISTINGS
-  NATIONAL MARKETING



"IOWA IS OUR FACTORY, LAND MARKETING IS OUR CRAFT, FARMLAND TRANSACTIONS ARE OUR PRODUCT, AND THE PEOPLE ARE WHAT MAKE UP OUR BUSINESS"

-Iowa Land Company



Luke and Matt are your local Land Brokers for Iowa Land Company, a family owned business which they Co-Founded with their two brothers Cody and Nick Skinner. Our goal is to be a trusted source in the Iowa farmland market while connecting buyers and sellers of Iowa land. Over the past six years we have represented clients in over 400 land real estate transactions selling 18,000 + acres of Iowa Land. We look forward to the opportunity to work for you and your family.



LUKE SKINNER | LAND BROKER
Luke@IowaLandCompany.com
515-468-3610

Branded in Land

MATT SKINNER | LAND BROKER
Matt@IowaLandCompany.com
515-443-5004