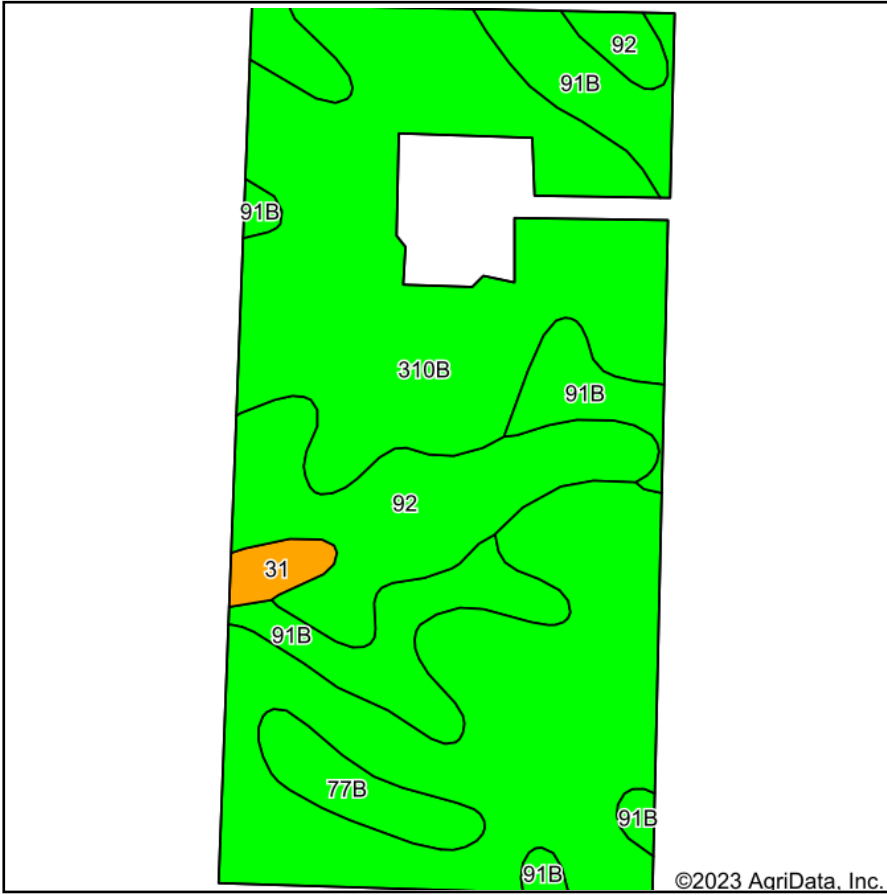
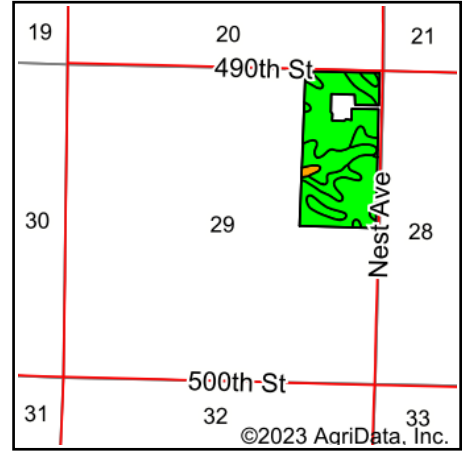


# Soils Map



Soils data provided by USDA and NRCS.



State: **Iowa**  
 County: **O'Brien**  
 Location: **29-94N-42W**  
 Township: **Caledonia**  
 Acres: **72.11**  
 Date: **12/11/2023**



Maps Provided By:  
  
 CUSTOMIZED ONLINE MAPPING  
 © AgriData, Inc. 2023 [www.AgriDataInc.com](http://www.AgriDataInc.com)



Area Symbol: IA141, Soil Area Version: 28

Code	Soil Description	Acres	Percent of field	CSR2 Legend	Non-Irr Class *c	CSR2**	CSR	*n NCCPI Overall	*n NCCPI Corn	*n NCCPI Small Grains	*n NCCPI Soybeans	
310B	Galva silty clay loam, 2 to 5 percent slopes	46.40	64.3%		Ile	95	70	75	74	71	75	
91B	Primghar silty clay loam, 2 to 5 percent slopes	11.88	16.5%		Ile	95	78	78	74	73	78	
92	Marcus silty clay loam, 0 to 2 percent slopes	10.22	14.2%		Ilw	94	75	75	74	68	75	
77B	Sac silty clay loam, loam substratum, 2 to 5 percent slopes	2.58	3.6%		Ile	95	68	77	73	70	77	
31	Afton silty clay loam, 0 to 2 percent slopes, occasionally flooded	1.03	1.4%		Ilw	80	72	68	65	59	68	
<b>Weighted Average</b>						<b>2.00</b>	<b>94.6</b>	<b>72</b>	<b>*n 75.5</b>	<b>*n 73.8</b>	<b>*n 70.7</b>	<b>*n 75.5</b>

\*\*IA has updated the CSR values for each county to CSR2.

\*n: The aggregation method is "Weighted Average using all components"

\*c: Using Capabilities Class Dominant Condition Aggregation Method

Soils data provided by USDA and NRCS.