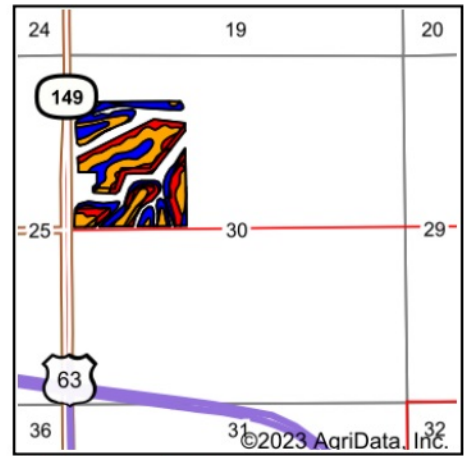
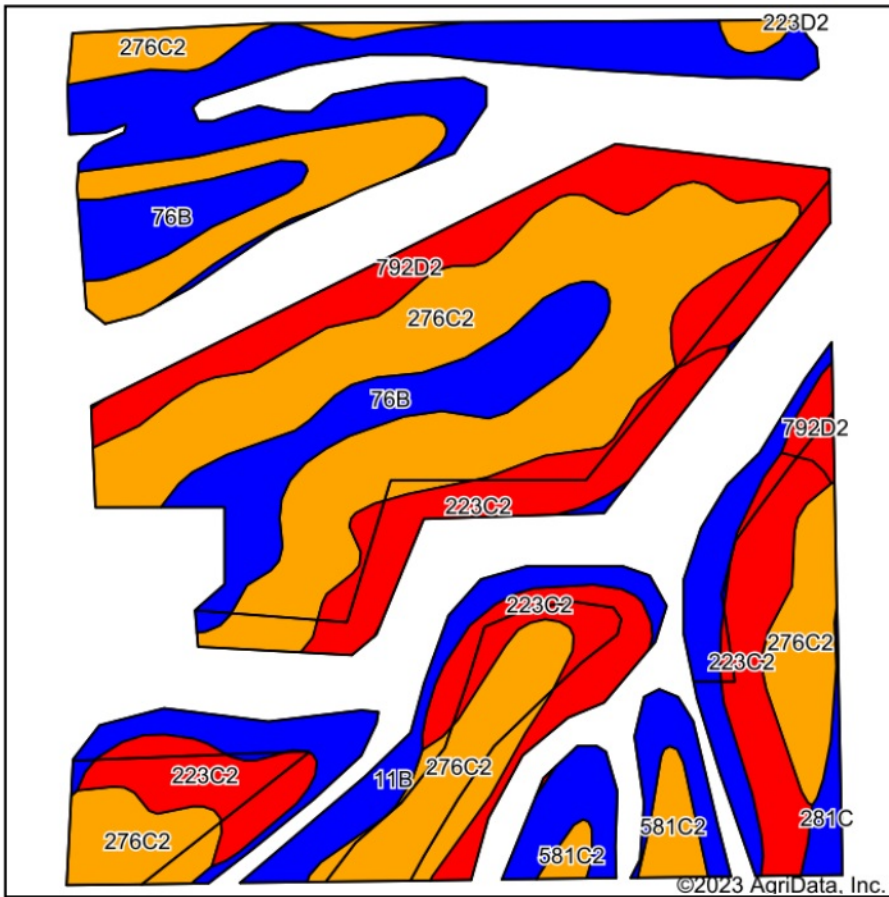


Soils Map



State: Iowa
 County: Wapello
 Location: 30-73N-13W
 Township: Highland
 Acres: 51.51
 Date: 11/8/2023



Maps Provided By:
surety
 CUSTOMIZED ONLINE MAPPING
 © AgriData, Inc. 2023 www.AgriDataInc.com



Soils data provided by USDA and NRCS.

Area Symbol: IA179, Soil Area Version: 32

Code	Soil Description	Acres	Percent of field	CSR2 Legend	Non-Irr Class *c	*i Corn Bu	*i Soybeans Bu	CSR2**	CSR	Corn Bu	Oats Bu	Soybeans Bu	*n NCCPI Soybeans	
276C2	Ladoga-Hedrick silt loams, 5 to 9 percent slopes, moderately eroded	20.31	39.4%	Yellow	Ille	195.2	56.6	73	64				72	
11B	Colo-Ely complex, 0 to 5 percent slopes	11.53	22.4%	Blue	Ilw	204.8	59.4	86	68				76	
223C2	Rinda silty clay loam, 5 to 9 percent slopes, moderately eroded	8.85	17.2%	Red	IVw	126.4	36.7	45	20				46	
792D2	Armstrong loam, 9 to 14 percent slopes, moderately eroded	4.81	9.3%	Red	IVe	88.0	25.5	11	10				44	
76B	Ladoga silt loam, 2 to 5 percent slopes	4.72	9.2%	Blue	Ile	212.8	61.7	86	85				77	
581C2	Otley-Nira silty clay loams, 5 to 9 percent slopes, moderately eroded	0.84	1.6%	Yellow	Ille	195.2	56.6	77	68				69	
281C	Otley silty clay loam, 5 to 9 percent slopes	0.45	0.9%	Blue	Ille	209.6	60.8	85	75	7	3	2	74	
Weighted Average						2.95	177.3	51.4	66.7	54.4	0.1	*-	*-	*n 66.2

**IA has updated the CSR values for each county to CSR2.

*i Yield data provided by the ISPAID Database version 8.1.1 developed by IA State University.

*n: The aggregation method is "Weighted Average using all components"

*c: Using Capabilities Class Dominant Condition Aggregation Method

Soils data provided by USDA and NRCS.