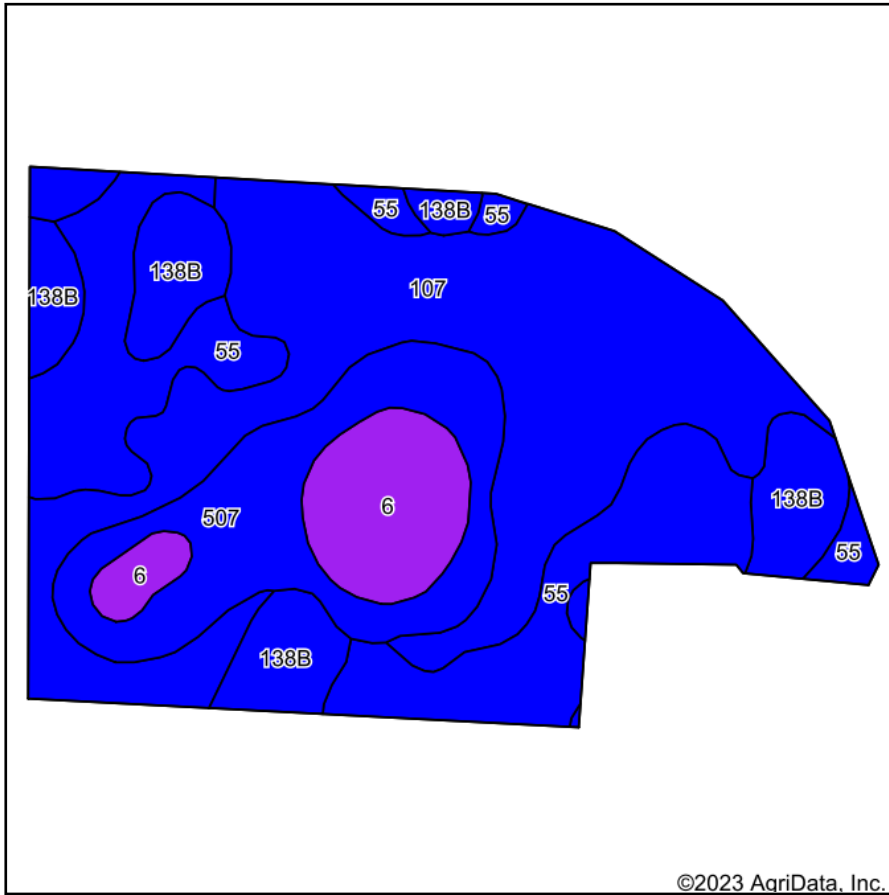
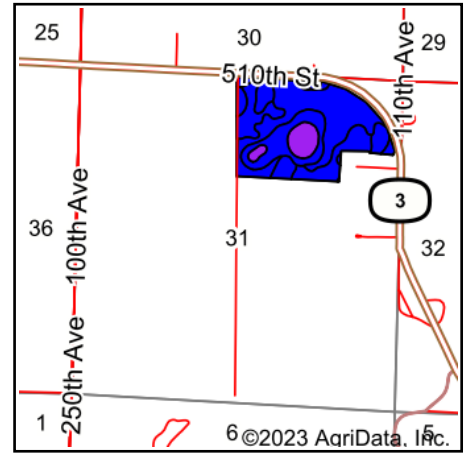


# Soils Map



Soils data provided by USDA and NRCS.



State: **Iowa**  
 County: **Pocahontas**  
 Location: **31-92N-34W**  
 Township: **Marshall**  
 Acres: **73.97**  
 Date: **7/5/2023**



Maps Provided By:  
**surety**<sup>®</sup>  
CUSTOMIZED ONLINE MAPPING  
 © AgriData, Inc. 2023 [www.AgriDataInc.com](http://www.AgriDataInc.com)



Area Symbol: IA151, Soil Area Version: 29

Code	Soil Description	Acres	Percent of field	CSR2 Legend	Non-Irr Class *c	CSR2**	CSR	*n NCCPI Overall	*n NCCPI Corn	*n NCCPI Small Grains	*n NCCPI Soybeans	
107	Webster clay loam, 0 to 2 percent slopes	30.23	40.9%		llw	86	81	82	78	60	82	
55	Nicollet clay loam, 1 to 3 percent slopes	16.62	22.5%		lw	89	86	81	81	64	81	
507	Canisteo clay loam, 0 to 2 percent slopes	11.28	15.2%		llw	84	76	81	71	56	81	
138B	Clarion loam, 2 to 6 percent slopes	9.53	12.9%		lle	89	78	83	78	62	83	
6	Okoboji silty clay loam, 0 to 1 percent slopes	6.31	8.5%		lllw	59	55	76	74	64	74	
<b>Weighted Average</b>						<b>1.86</b>	<b>84.5</b>	<b>78.8</b>	<b>*n 81.2</b>	<b>*n 77.3</b>	<b>*n 60.9</b>	<b>*n 81.1</b>

\*\*IA has updated the CSR values for each county to CSR2.  
 \*n: The aggregation method is "Weighted Average using all components"  
 \*c: Using Capabilities Class Dominant Condition Aggregation Method  
 Soils data provided by USDA and NRCS.