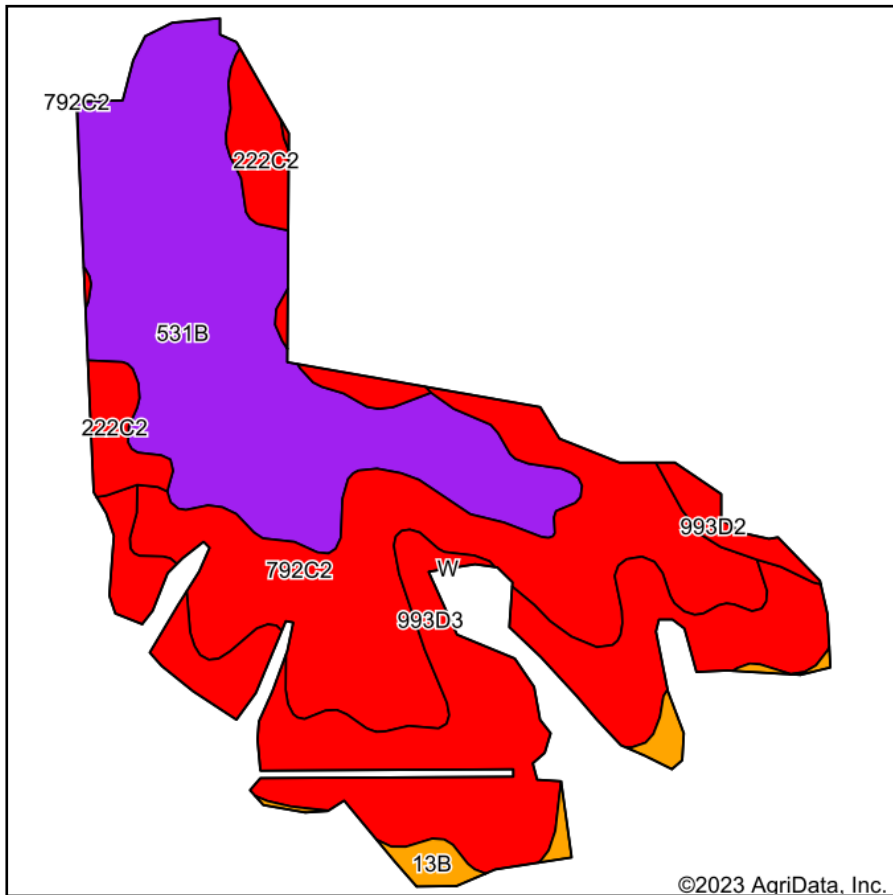
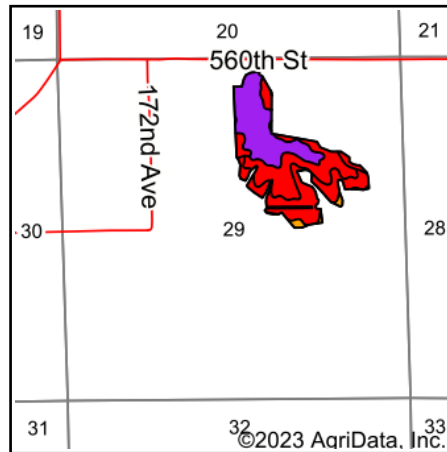


Soils Map



Soils data provided by USDA and NRCS.



State: **Iowa**
 County: **Appanoose**
 Location: **19-68N-18W**
 Township: **Pleasant**
 Acres: **51.7**
 Date: **6/13/2023**



Area Symbol: IA007, Soil Area Version: 29

Code	Soil Description	Acres	Percent of field	CSR2 Legend	Non-Irr Class *c	*i Corn Bu	*i Soybeans Bu	CSR2**	CSR	*n NCCPI Soybeans	
531B	Kniffin silt loam, 2 to 5 percent slopes	18.29	35.4%		IIIe	80.0	23.2	55	58	66	
993D3	Armstrong-Gara complex, 9 to 14 percent slopes, severely eroded	14.35	27.8%		VIe	120.0	34.8	19	15	39	
792C2	Armstrong loam, 5 to 9 percent slopes, moderately eroded	13.93	26.9%		IIIe	123.2	35.7	31	26	47	
222C2	Clarinda silty clay loam, 5 to 9 percent slopes, moderately eroded	3.12	6.0%		IVw	140.8	40.8	28	25	42	
13B	Olmitz-Vesser-Colo complex, 2 to 5 percent slopes	1.16	2.2%		IIw	192.0	55.7	79	68	80	
993D2	Armstrong-Gara loams, 9 to 14 percent slopes, moderately eroded complex	0.85	1.6%		IVe	131.2	38.0	22	20	46	
Weighted Average						3.89	109.8	31.8	36.9	35.1	*n 51.9

**IA has updated the CSR values for each county to CSR2.

*i Yield data provided by the ISPAID Database version 8.1.1 developed by IA State University.

*n: The aggregation method is "Weighted Average using all components"

*c: Using Capabilities Class Dominant Condition Aggregation Method

Soils data provided by USDA and NRCS.