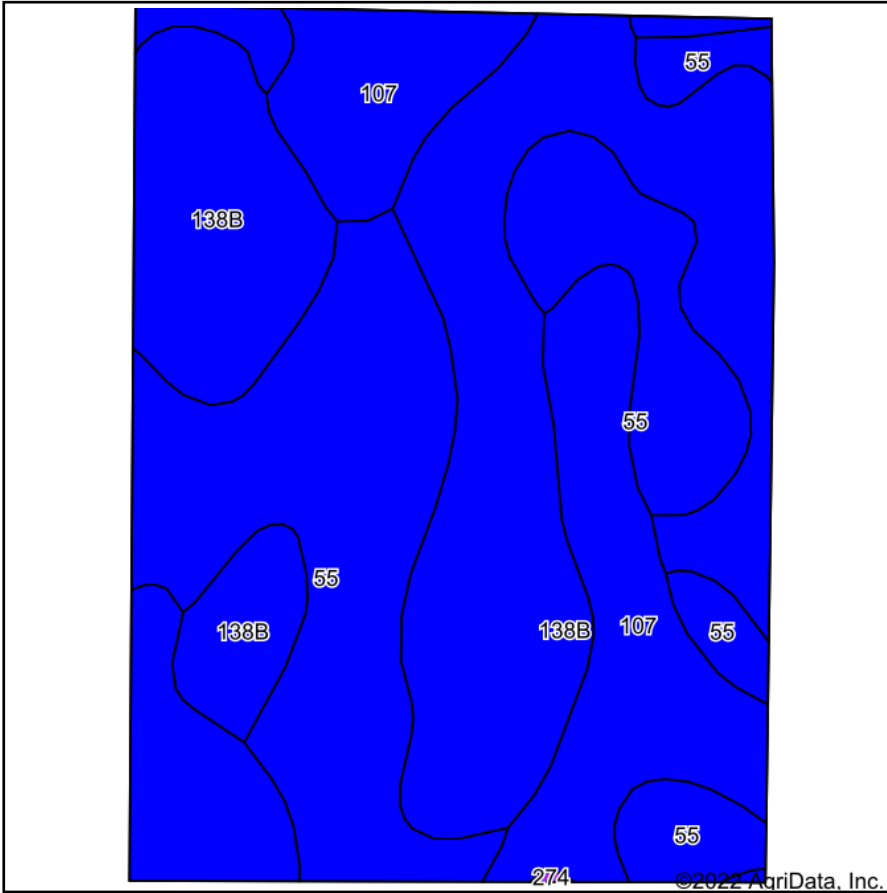
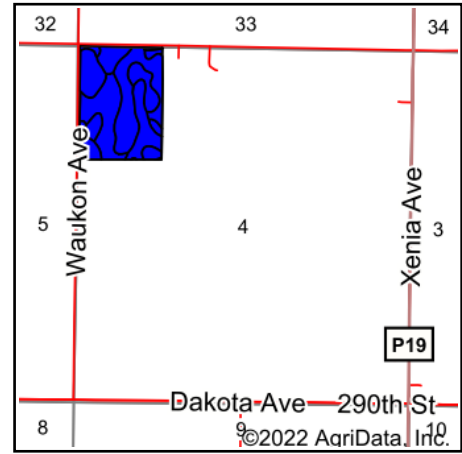


# Soils Map



Soils data provided by USDA and NRCS.



State: **Iowa**  
 County: **Calhoun**  
 Location: **4-87N-31W**  
 Township: **Cedar**  
 Acres: **53.22**  
 Date: **10/11/2022**



Maps Provided By:



Area Symbol: IA025, Soil Area Version: 31

Code	Soil Description	Acres	Percent of field	CSR2 Legend	Non-Irr Class *c	*i Corn Bu	*i Soybeans Bu	CSR2**	CSR	*n NCCPI Soybeans	
138B	Clarion loam, 2 to 6 percent slopes	21.74	40.8%		Ile	225.6	65.4	89	80	84	
55	Nicollet clay loam, 1 to 3 percent slopes	18.63	35.0%		Iw	233.6	67.7	89	88	82	
107	Webster clay loam, 0 to 2 percent slopes	12.85	24.1%		Ilw	224.0	65.0	86	83	82	
<b>Weighted Average</b>						<b>1.65</b>	<b>228</b>	<b>66.1</b>	<b>88.3</b>	<b>83.5</b>	<b>*n 82.8</b>

\*\*IA has updated the CSR values for each county to CSR2.

\*i Yield data provided by the ISPAID Database version 8.1.1 developed by IA State University.

\*n: The aggregation method is "Weighted Average using all components"

\*c: Using Capabilities Class Dominant Condition Aggregation Method

Soils data provided by USDA and NRCS.