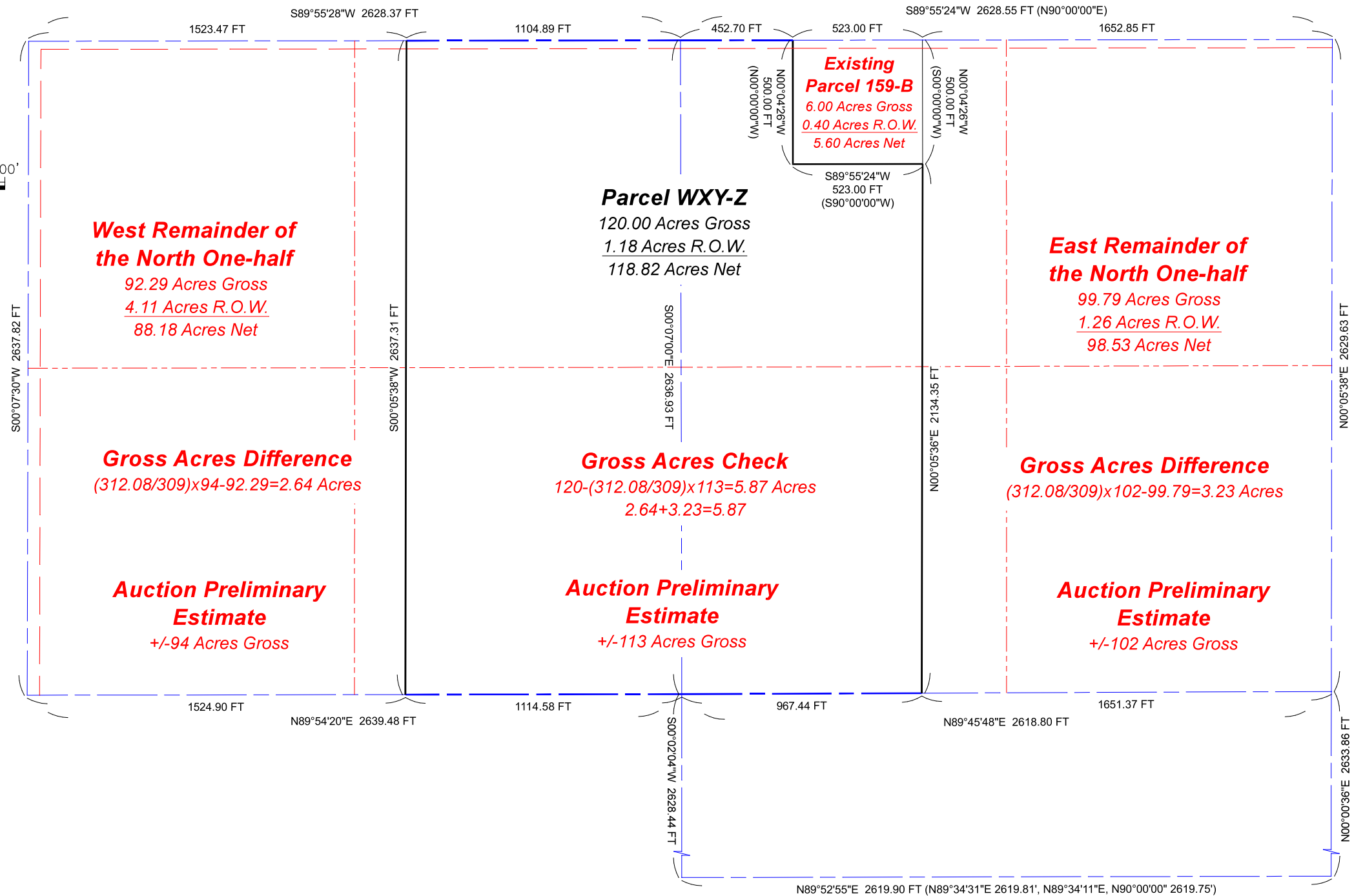
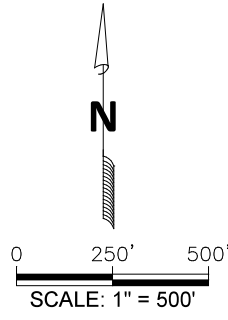


Field work completed XX/XX/XX



West Remainder of the North One-half

92.29 Acres Gross
4.11 Acres R.O.W.
88.18 Acres Net

Parcel WXY-Z
120.00 Acres Gross
1.18 Acres R.O.W.
118.82 Acres Net

Existing Parcel 159-B
6.00 Acres Gross
0.40 Acres R.O.W.
5.60 Acres Net

East Remainder of the North One-half

99.79 Acres Gross
1.26 Acres R.O.W.
98.53 Acres Net

Gross Acres Difference
 $(312.08/309) \times 94 - 92.29 = 2.64$ Acres

Gross Acres Check
 $120 - (312.08/309) \times 113 = 5.87$ Acres
 $2.64 + 3.23 = 5.87$

Gross Acres Difference
 $(312.08/309) \times 102 - 99.79 = 3.23$ Acres

Auction Preliminary Estimate
+/- 94 Acres Gross

Auction Preliminary Estimate
+/- 113 Acres Gross

Auction Preliminary Estimate
+/- 102 Acres Gross