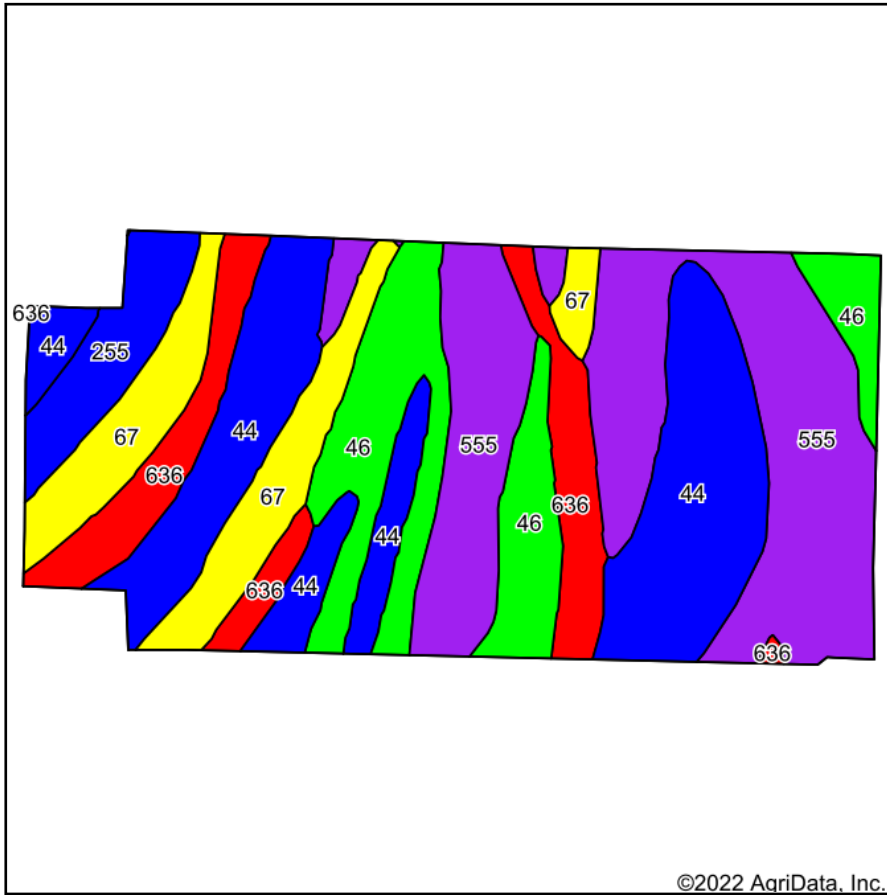
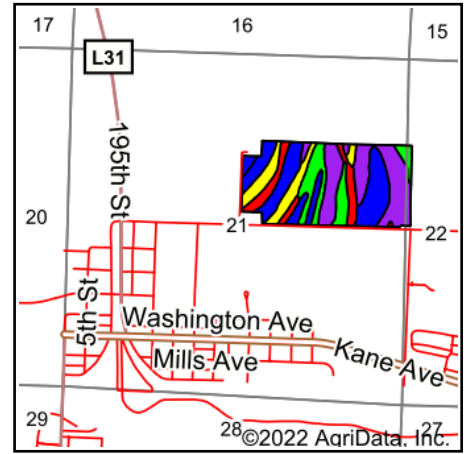


# Soils Map



Soils data provided by USDA and NRCS.



State: **Iowa**  
 County: **Mills**  
 Location: **22-72N-43W**  
 Township: **Glenwood**  
 Acres: **74.06**  
 Date: **7/21/2022**



Maps Provided By:  
  
 CUSTOMIZED ONLINE MAPPING  
 © AgriData, Inc. 2021 www.AgriDataInc.com



Area Symbol: IA129, Soil Area Version: 32

Code	Soil Description	Acres	Percent of field	CSR2 Legend	Non-Irr Class *c	Irr Class *c	*i Corn Bu	*i Soybeans Bu	CSR2**	CSR	*n NCCPI Soybeans
555	Percival silty clay, dark surface, 0 to 2 percent slopes	22.13	29.9%		IIw	IIw	80.0	23.2	52	60	44
44	Blencoe silty clay, 0 to 2 percent slopes	19.29	26.0%		IIw		214.4	62.2	87	70	63
46	Keg silt loam, 0 to 2 percent slopes	11.63	15.7%		Iw		233.6	67.7	98	90	82
67	Woodbury silty clay, 0 to 2 percent slopes	9.05	12.2%		IIIw		164.8	47.8	67	55	57
636	Buckney fine sandy loam, 0 to 2 percent slopes	8.25	11.1%		IIIs		80.0	23.2	34	20	40
255	Cooper silty clay loam, 0 to 2 percent slopes	3.71	5.0%		IIw		80.0	23.2	84	70	66
Weighted Average					2.08	*-	149.5	43.4	69.8	62.7	*n 57.2

\*\*IA has updated the CSR values for each county to CSR2.

\*i Yield data provided by the ISPAID Database version 8.1.1 developed by IA State University.

\*n: The aggregation method is "Weighted Average using all components"

\*c: Using Capabilities Class Dominant Condition Aggregation Method

\*- Irr Class weighted average cannot be calculated on the current soils data due to missing data.

Soils data provided by USDA and NRCS.