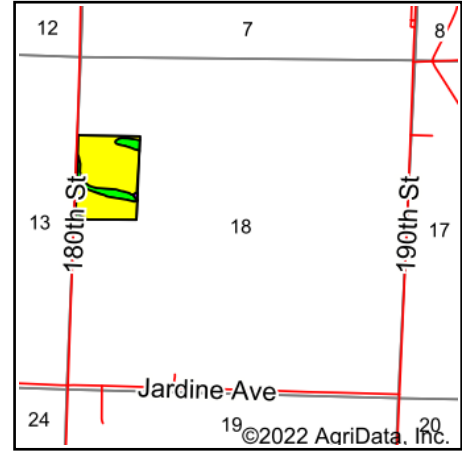


Soils Map



State: **Iowa**
 County: **Mills**
 Location: **18-72N-43W**
 Township: **Plattville**
 Acres: **29.5**
 Date: **7/21/2022**



Maps Provided By:

 CUSTOMIZED ONLINE MAPPING
 © AgriData, Inc. 2021 www.AgriDataInc.com



Soils data provided by USDA and NRCS.

Area Symbol: IA129, Soil Area Version: 32

| Code | Soil Description | Acres | Percent of field | CSR2 Legend | Non-Irr Class *c | Irr Class *c | Range Production (lbs/acre/yr) | *i Corn Bu | *i Soybeans Bu | CSR2** | CSR | *n NCCPI Soybeans |
|-------------------------|---|-------|------------------|-------------|------------------|--------------|--------------------------------|------------|----------------|-------------|-------------|-------------------|
| 137 | Haynie silt loam, 0 to 2 percent slopes, occasionally flooded | 25.29 | 85.7% | | IIw | IIw | 4410 | 195.2 | 56.6 | 67 | 70 | 81 |
| 144 | Blake silty clay loam, 0 to 2 percent slopes | 4.10 | 13.9% | | Iw | Iw | 0 | 230.4 | 66.8 | 92 | 75 | 92 |
| 156 | Albaton silty clay, 0 to 2 percent slopes, occasionally flooded | 0.11 | 0.4% | | IIIw | IIIw | 3550 | 161.6 | 46.9 | 52 | 55 | 53 |
| Weighted Average | | | | | 1.86 | 1.86 | 3793.9 | 200 | 58 | 70.4 | 70.6 | *n 82.4 |

**IA has updated the CSR values for each county to CSR2.

*i Yield data provided by the ISPAID Database version 8.1.1 developed by IA State University.

*n: The aggregation method is "Weighted Average using all components"

*c: Using Capabilities Class Dominant Condition Aggregation Method

Soils data provided by USDA and NRCS.