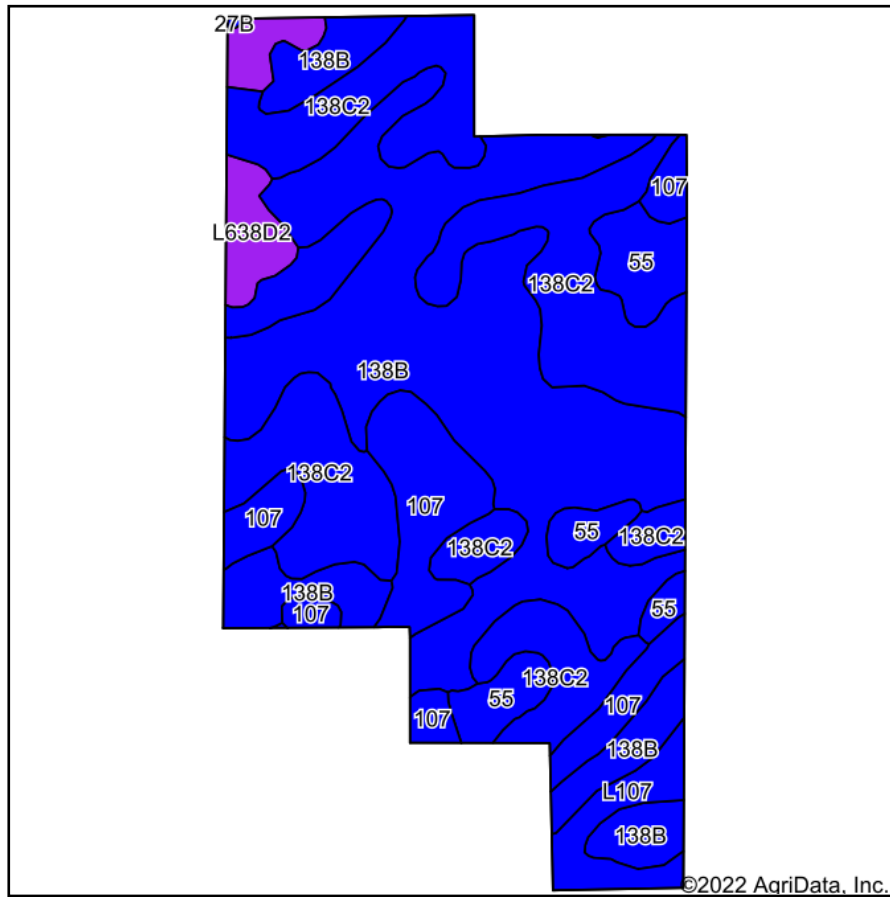
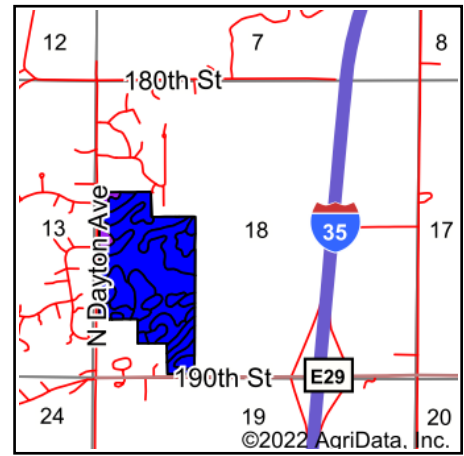


# Soils Map



Soils data provided by USDA and NRCS.



State: **Iowa**  
 County: **Story**  
 Location: **18-84N-23W**  
 Township: **Milford**  
 Acres: **94.86**  
 Date: **5/24/2022**



Maps Provided By:



Area Symbol: IA169, Soil Area Version: 33

Code	Soil Description	Acres	Percent of field	CSR2 Legend	Non-Irr Class *c	*i Corn Bu	*i Soybeans Bu	CSR2**	CSR	*n NCCPI Soybeans
138B	Clarion loam, 2 to 6 percent slopes	40.84	43.1%		Ile	225.6	65.4	89	86	84
138C2	Clarion loam, 6 to 10 percent slopes, moderately eroded	30.92	32.6%		IIle	204.8	59.4	83	68	73
107	Webster clay loam, 0 to 2 percent slopes	10.63	11.2%		IIlw	224.0	65.0	86	89	82
55	Nicollet clay loam, 1 to 3 percent slopes	6.07	6.4%		Iw	233.6	67.7	89	94	82
L638D2	Omsrud-Storden complex, Bemis moraine, 10 to 16 percent slopes, moderately eroded	3.53	3.7%		IVe	0.0	0.0	53		66
L107	Webster clay loam, Bemis moraine, 0 to 2 percent slopes	2.87	3.0%		IIlw	0.0	0.0	88		84
Weighted Average					2.34	203.9	59.1	85.3	*-	*n 79.4

\*\*IA has updated the CSR values for each county to CSR2.

\*- CSR weighted average cannot be calculated on the current soils data, use prior data version for csr values.

\*i Yield data provided by the ISPAID Database version 8.1.1 developed by IA State University.

\*n: The aggregation method is "Weighted Average using all components"

\*c: Using Capabilities Class Dominant Condition Aggregation Method

Soils data provided by USDA and NRCS.