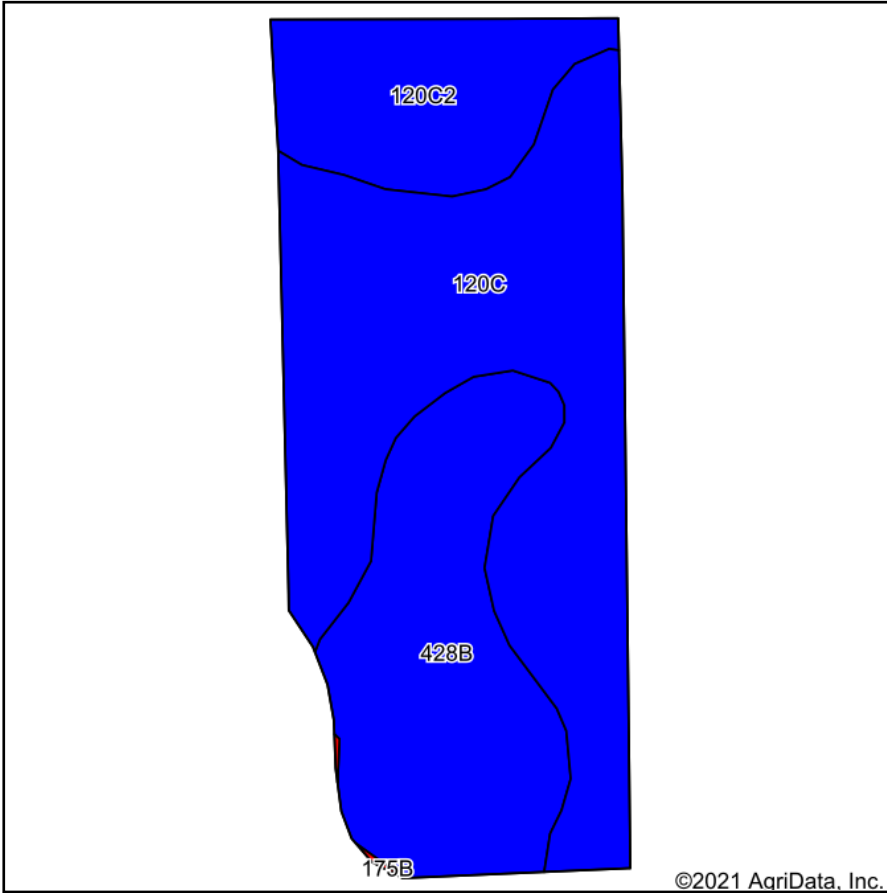
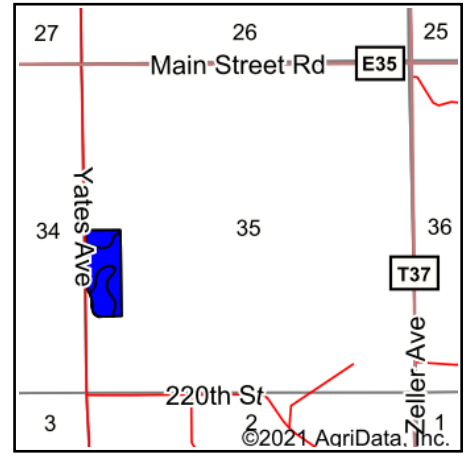


Soils Map



Soils data provided by USDA and NRCS.



State: **Iowa**
 County: **Marshall**
 Location: **35-84N-17W**
 Township: **Marion**
 Acres: **16.68**
 Date: **9/14/2021**



Maps Provided By:



© AgriData, Inc. 2021

www.AgriDataInc.com



Area Symbol: IA127, Soil Area Version: 25

Code	Soil Description	Acres	Percent of field	CSR2 Legend	Non-Irr Class *c	*i Corn	*i Soybeans	CSR2**	CSR	*n NCCPI Soybeans
120C	Tama silty clay loam, 5 to 9 percent slopes	8.81	52.8%		IIIe	216	62.6	90	80	77
428B	Ely silty clay loam, 2 to 5 percent slopes	5.10	30.6%		Ile	220.8	64	88	88	82
120C2	Tama silty clay loam, 5 to 9 percent slopes, eroded	2.77	16.6%		IIIe	211.2	61.2	87	78	70
Weighted Average						216.7	62.8	88.9	82.1	*n 77.4

**IA has updated the CSR values for each county to CSR2.

*i Yield data provided by the ISPAID Database version 8.1.1 developed by IA State University.

*n: The aggregation method is "Weighted Average using all components"

*c: Using Capabilities Class Dominant Condition Aggregation Method

Soils data provided by USDA and NRCS.