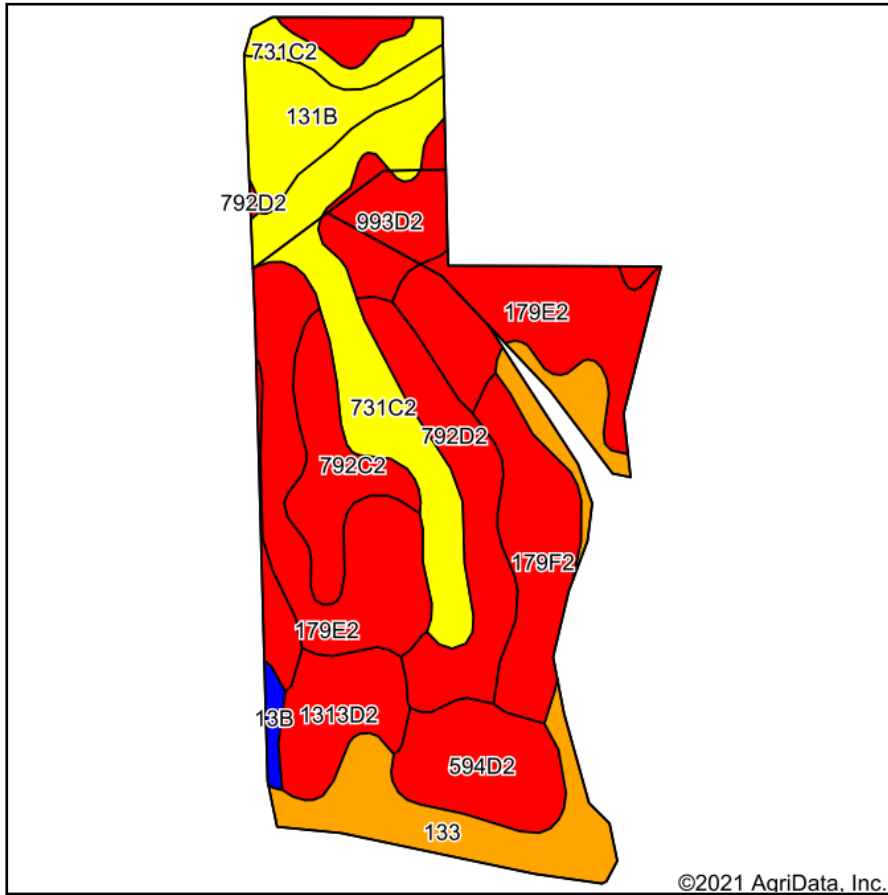
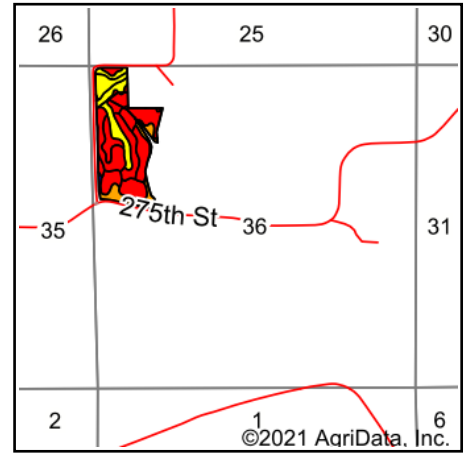


# Soils Map



Soils data provided by USDA and NRCS.



State: **Iowa**  
 County: **Monroe**  
 Location: **36-71N-17W**  
 Township: **Monroe**  
 Acres: **39.6**  
 Date: **5/7/2021**



Maps Provided By:  
**surety**  
 CUSTOMIZED ONLINE MAPPING  
 © AgriData, Inc. 2021 www.AgriDataInc.com



Area Symbol: IA135, Soil Area Version: 28

Code	Soil Description	Acres	Percent of field	CSR2 Legend	Non-Irr Class *c	*i Corn	*i Soybeans	CSR2**	CSR	*n NCCPI Soybeans
179E2	Gara loam, 14 to 18 percent slopes, moderately eroded	9.37	23.7%		Vle	139.2	40.4	35	33	53
731C2	Pershing silty clay loam, 5 to 9 percent slopes, moderately eroded	6.08	15.4%		Ille	80	23.2	62	45	58
133	Colo silty clay loam, heavy till, 0 to 2 percent slopes, occasionally flooded	4.65	11.7%		Ilw	204.8	59.4	78	85	86
792D2	Armstrong loam, 9 to 14 percent slopes, moderately eroded	3.53	8.9%		IVe	88	25.5	9	13	44
179F2	Gara loam, 18 to 24 percent slopes, moderately eroded	3.14	7.9%		Vle	115.2	33.4	12	13	37
594D2	Galland loam, heavy loess, 9 to 14 percent slopes, moderately eroded	2.80	7.1%		IVe	88	25.5	19	5	51
792C2	Armstrong loam, 5 to 9 percent slopes, moderately eroded	2.36	6.0%		Ille	123.2	35.7	31	27	48
131B	Pershing silt loam, 2 to 5 percent slopes	2.28	5.8%		Ille	80	23.2	70	67	62
993D2	Gara-Armstrong loams, 9 to 14 percent slopes, moderately eroded	2.26	5.7%		IVe	123.2	35.7	35	20	49
1313D2	Munterville silt loam, 9 to 14 percent slopes, moderately eroded	2.22	5.6%		Vle	80	23.2	34	10	42
1313E2	Munterville silt loam, 14 to 18 percent slopes, moderately eroded	0.62	1.6%		Vle	80	23.2	22	5	40
13B	Olmitz-Colo-Vesser complex, 2 to 5 percent slopes	0.29	0.7%		Ilw	192	55.7	82	60	72
Weighted Average						118.6	34.4	40.8	34.9	*n 54.7

\*\*IA has updated the CSR values for each county to CSR2.

\*i Yield data provided by the ISPAID Database version 8.1.1 developed by IA State University.

\*n: The aggregation method is "Weighted Average using all components"

\*c: Using Capabilities Class Dominant Condition Aggregation Method

Soils data provided by USDA and NRCS.