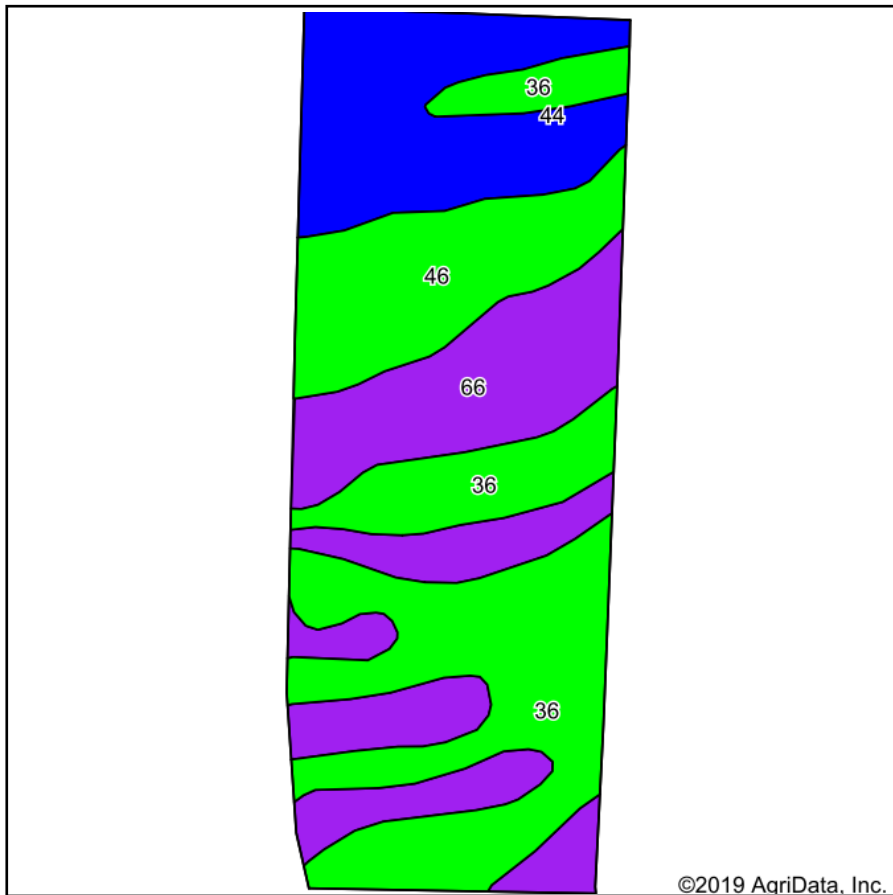
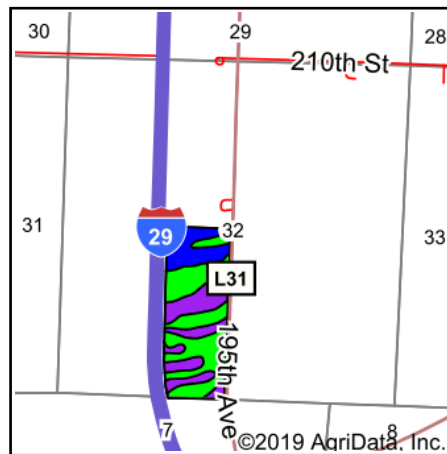


Soils Map



Soils data provided by USDA and NRCS.







State: **Iowa**
 County: **Fremont**
 Location: **32-69N-43W**
 Township: **Benton**
 Acres: **58.81**
 Date: **6/9/2020**



Maps Provided By:

 © AgriData, Inc. 2019 www.AgriDataInc.com



Area Symbol: IA071, Soil Area Version: 26									
Code	Soil Description	Acres	Percent of field	CSR2 Legend	Non-Irr Class *c	CSR2**	CSR	*n NCCPI Soybeans	
36	Salix silty clay loam	20.91	35.6%		lw	98	90	95	
66	Luton silty clay	18.03	30.7%		IIIw	58	40	53	
44	Blencoe silty clay	11.31	19.2%		IIw	86	70	59	
46	Keg silt loam	8.56	14.6%		lw	98	90	79	
Weighted Average						83.4	70.8	*n 72.9	

**IA has updated the CSR values for each county to CSR2.

*n: The aggregation method is "Weighted Average using major components"

*c: Using Capabilities Class Dominant Condition Aggregation Method

Soils data provided by USDA and NRCS.