

ACCESS EASEMENT

NW COR. SW-NW
SEC. 22-72-13.
SET 5/8" REBAR
WITH YELLOW
PLASTIC CAP #19960.

CL ROADWAY EASEMENT ESTABLISHED BY DEED
RECORD BOOK 113 PAGE 247 AND SHOWN AS
36' WIDE ON PLAT OF COUNTY ROAD PROJECT.

POINT OF BEGINNING
OF ACCESS EASEMENT

1952 PLAT OF
LOCH BURNS HUNTING
AND FISHING CLUB
BOOK Z PAGE 19

SW 1/4 - NW 1/4
SEC. 22-72-13

PARCEL A
BOOK 8-H
PAGE 79

LINE TABLE		
LINE	BEARING	LENGTH
L1	S79°30'50"E	80.53'
L2	S24°19'15"E	79.14'

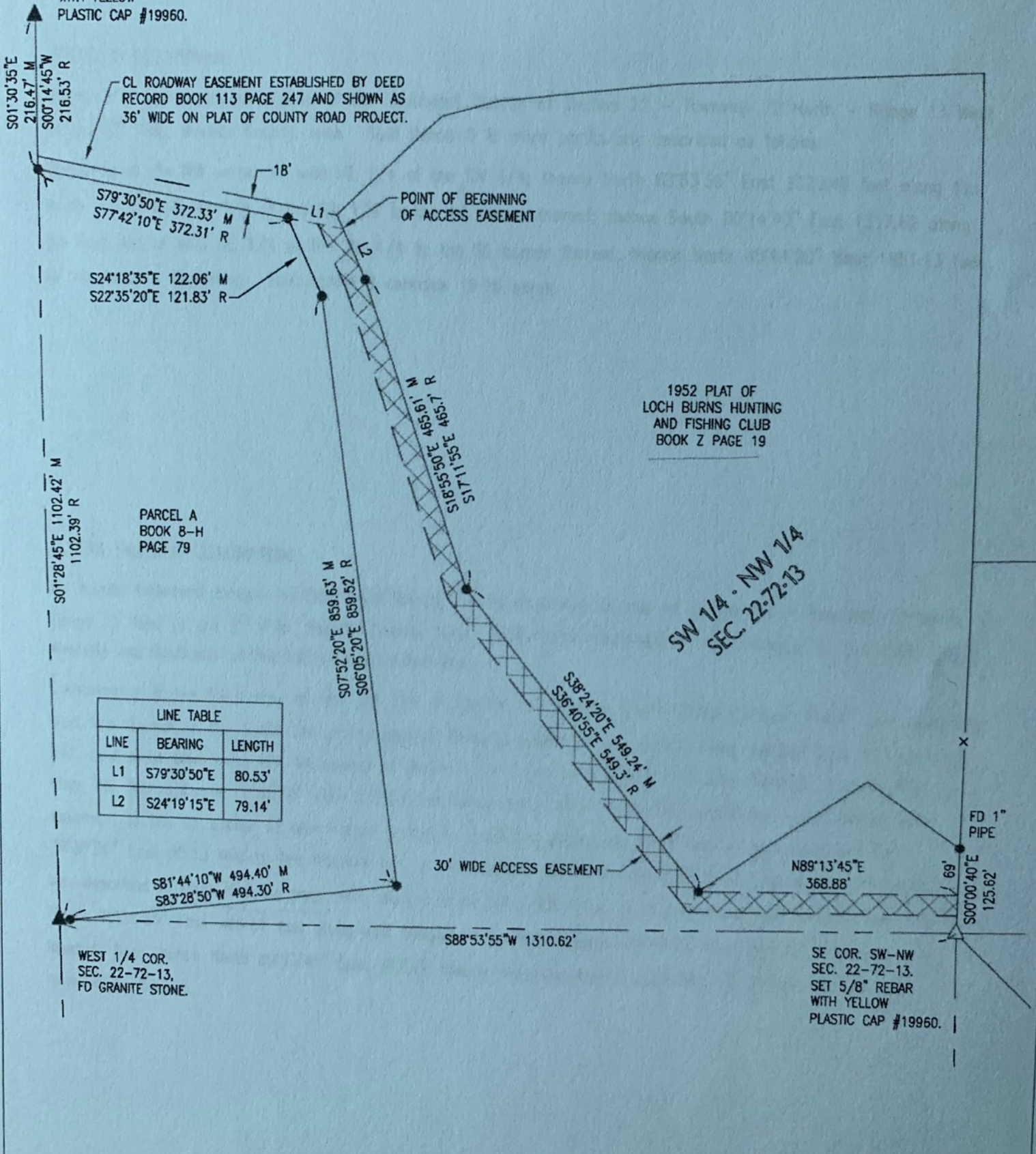
30' WIDE ACCESS EASEMENT

FD 1" PIPE

WEST 1/4 COR.
SEC. 22-72-13,
FD GRANITE STONE.

SE COR. SW-NW
SEC. 22-72-13.
SET 5/8" REBAR
WITH YELLOW
PLASTIC CAP #19960.

▲ = SECTION CORNER FOUND



22-72-13.
5/8" REBAR
YELLOW
PLASTIC CAP #19960.

1952 PLAT OF
LOCH BURNS HUNTING
AND FISHING CLUB
BOOK Z PAGE 19

ACCESS EASEMENT SEE PAGE 2

LOCH BURNS CONDOMINIUM
ASSOCIATION, INC.
BOOK 6-F PAGE 441

SE 1/4 - NW 1/4
SEC. 22-72-13

PARCEL A
BOOK 8-H
PAGE 79

SW 1/4 - NW 1/4
SEC. 22-72-13

1307.80'
EXISTING FENCE

SOUTH 16 ACRES
OF THE SE-NW

POINT OF BEGINNING

N88°53'55"E 1320.40' M
S89°19'35"E 1320.4' R

1/4 COR.
22-72-13,
GRANITE STONE.

S88°53'55"W 1310.62' M
N89°19'35"W 1310.8' R

NW COR. NE-SW
SEC. 22-72-13.
SET 5/8" REBAR
WITH YELLOW
PLASTIC CAP #19960.

PARCEL B
19.96 ACRES

NW 1/4 - SW 1/4
SEC. 22-72-13

NE 1/4 - SW 1/4
SEC. 22-72-13

N45°44'00"W 1851.13'

COR. NW-SW
C. 22-72-13.
1" PIPE.

N88°49'10"E 2602.12'

▲ = SECTION CORNER FOUND
△ = SECTION CORNER SET



SE COR
SEC. 2
SET 5/
WITH Y
PLASTIC