



CLAY COUNTY, IA

100 ACRES +/-

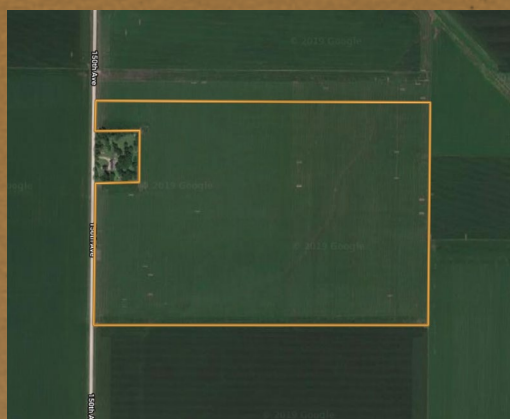
96.4
CSR2

LAND AUCTION

AUGUST 22ND 2019 • 1PM | LOCATION: ROYAL COMMUNITY CENTER • ROYAL, IA

Farm Information

- 100 Total Acres
- 99.5 Cropland Acres
- 96.4 CSR2 Average
- Sold as 1 Tract
- 1.5 Miles North of Royal, Iowa



Seller: Breezy Acres LLC

Farm Location: 1.5 miles North of Royal, Iowa

Legal Description: Lone Tree Township, Section 36

Farm Possession: Rented for 2019 farming season. Full possession once crop is harvested.



LEGAL TERMS

Information provided herein was obtained from sources deemed reliable, but neither Iowa Land Company nor the Seller make any guarantees or warranties as to its accuracy. All potential bidders are urged to inspect the property, its condition, and to rely on their own conclusion. All sketches, dimensions, and acreage figures are approximate or "more or less". Any announcements made auction day by Iowa Land Company will take precedence over any previous printed materials or oral statements. Iowa Land Company and Seller reserve the right to preclude any person from bidding if there is any questions as to the person's credentials or fitness to bid.

VIEW DETAILS AND LAND FOR SALE AT IOWALANDCOMPANY.COM



MATT SKINNER
515-443-5004
AUCTION CONTACT

Calhoun County 78 Acres - **PENDING**
Palo Alto County 106 Acres - **SOLD**
Calhoun County 40 Acres- **SOLD**
Plymouth County 834 Acres - **SOLD**
Palo Alto County 149 Acres - **SOLD**
Emmet County 188 Acres - **SOLD**

Contact Your Local Land Brokers



LUKE SKINNER
515-468-3610
AUCTION CONTACT