

APPANOOSE / DAVIS COUNTY, IA



469 ACRES +/- 6 TRACTS



AUGUST 8TH 2019 • 11AM | LOCATION: DAVIS COUNTY FAIRGROUNDS • BLOOMFIELD, IA

TRACT 1

- 44.34 +/- Acres
- 41.12 Cropland Acres

TRACT 3

- 57 +/- Acres
- 47.06 Cropland Acres

TRACT 5

- 134.25 +/- Acres
- 53.21 Cropland Acres

TRACT 2

- 59.25 +/- Acres
- 51.84 Cropland Acres

TRACT 4

- 42.25 +/- Acres
- 37.26 Cropland Acres

TRACT 6

- 132.25 +/- Acres
- 25.16 Cropland Acres

Seller: Ron and Diane Mason

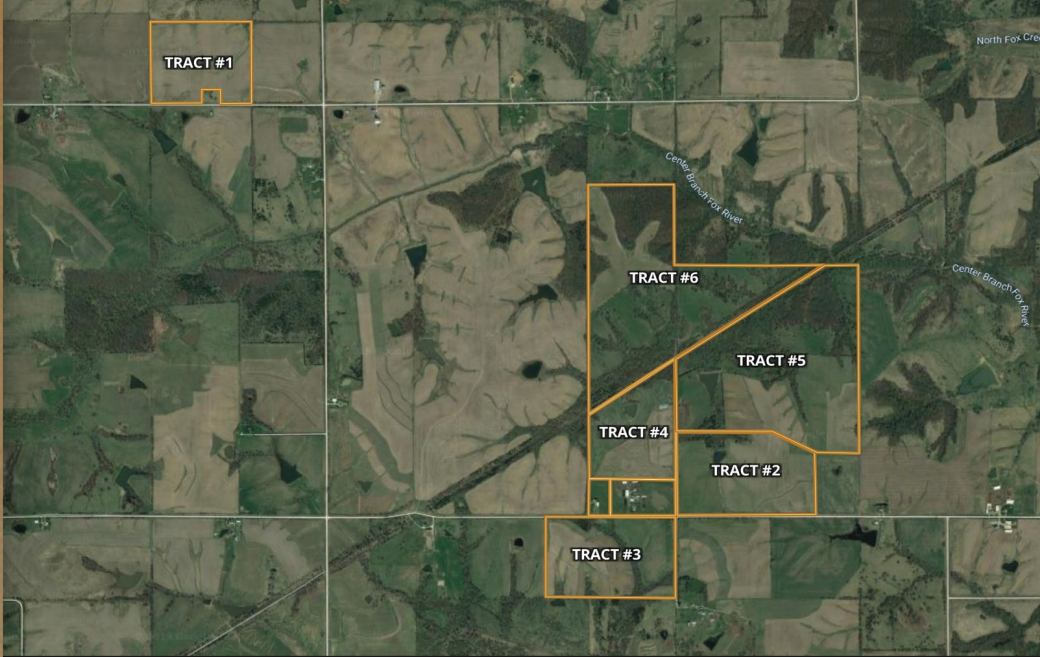
Farm Location: 12 miles west of Bloomfield, Iowa

Legal Description: Appanoose County, Udell TWP section 13,14 and Washington TWP Section 24 and Davis County, Fox River TWP section 14.

Farm Closing: September 24th, 2019

LEGAL TERMS

Information provided herein was obtained from sources deemed reliable, but neither Iowa Land Company nor the Seller make any guarantees or warranties as to its accuracy. All potential bidders are urged to inspect the property, its condition, and to rely on their own conclusion. All sketches, dimensions, and acreage figures are approximate or "more or less". Any announcements made auction day by Iowa Land Company will take precedence over any previous printed materials or oral statements. Iowa Land Company and Seller reserve the right to preclude any person from bidding if there is any questions as to the person's credentials or fitness to bid.



VIEW DETAILS AND LAND FOR SALE AT **IOWALANDCOMPANY.COM**



JIM DAVIS
641-777-5484
AUCTION CONTACT



NICK SKINNER
515-650-0974
LAND AGENT



LUKE SKINNER
515-468-3610
LAND AUCTIONEER



MATT SKINNER
515-443-5004
LAND BROKER