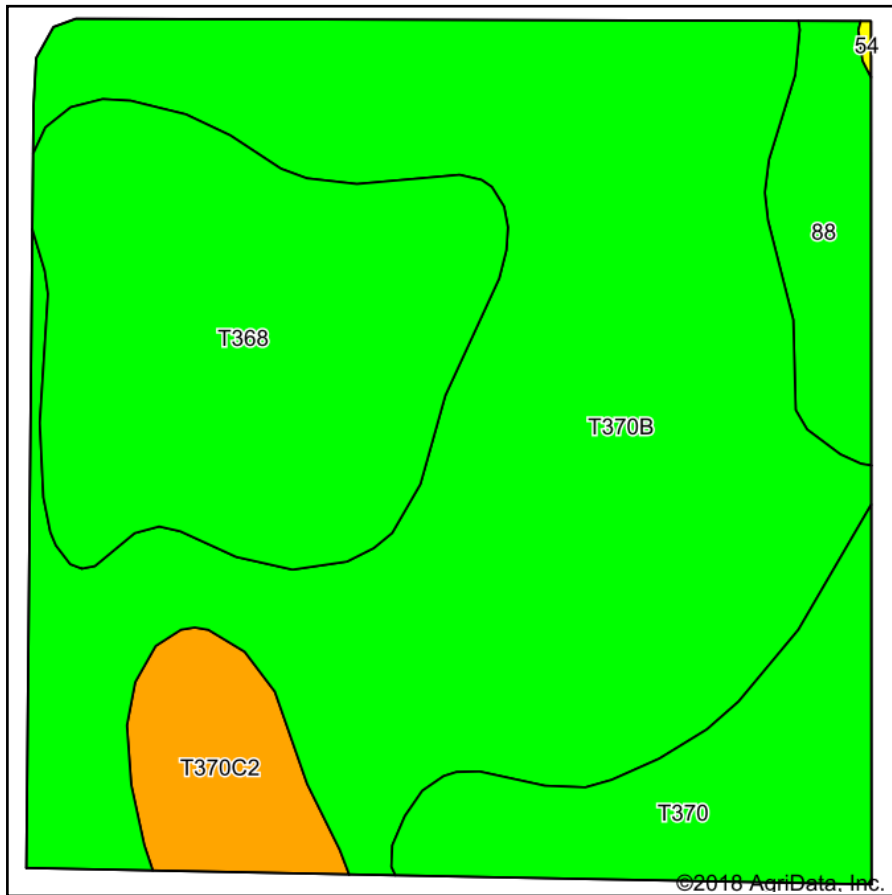
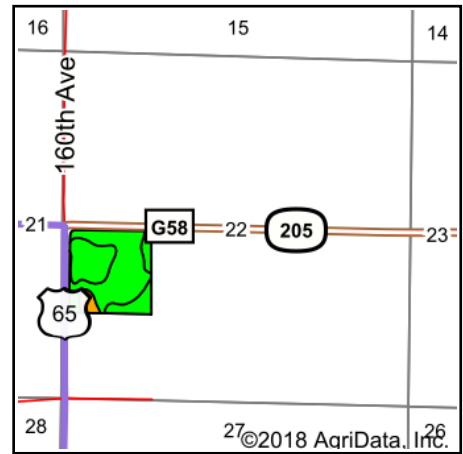


# Soils Map



Soils data provided by USDA and NRCS.



State: **Iowa**  
 County: **Warren**  
 Location: **22-75N-23W**  
 Township: **Otter**  
 Acres: **36.05**  
 Date: **7/5/2018**



Maps Provided By:



## Area Symbol: IA181, Soil Area Version: 22

Code	Soil Description	Acres	Percent of field	CSR2 Legend	Non-Irr Class *c	CSR2**	CSR
T370B	Sharpsburg silty clay loam, terrace, 2 to 5 percent slopes	20.21	56.1%		Ile	91	87
T368	Macksburg silty clay loam, terrace, 0 to 2 percent slopes	8.49	23.6%		Iw	94	95
T370	Sharpsburg silty clay loam, terrace, 0 to 2 percent slopes	3.67	10.2%		I	96	92
T370C2	Sharpsburg silty clay loam, terrace, 5 to 9 percent slopes, eroded	1.88	5.2%		IIle	79	67
88	Nevin silty clay loam, 0 to 2 percent slopes	1.80	5.0%		Iw	93	90
Weighted Average						91.7	88.5

\*\*IA has updated the CSR values for each county to CSR2.

\*c: Using Capabilities Class Dominant Condition Aggregation Method

Soils data provided by USDA and NRCS.